

STUDENT INFORMATION— RESEARCH

Authority and Governance of Candidature

Academic Senate

The Academic Senate is the principal academic advisory body in the University. Its role and duties oversee the academic life of the University. It has certain powers delegated to it by Council, such as final approval of examination results and the completion of requirements for the award of degrees. Senate makes recommendations to Council concerning the introduction of new programs of study and amendments to the rules and other matters which have been discussed and considered by Senate's various academic committees.

Higher Degree Research Committee

The Higher Degree Research Committee (HDRC) is a Standing Committee of Academic Senate. It gives approval and makes recommendations, decisions and determinations on matters relating to the Doctoral Degree Rules and Rules for the Degree of Master by Research. HDRC considers and makes recommendations to Academic Senate on matters relating to higher degree research policies and procedures as well as research student commencement, progression and completion including the appointment of examiners and thesis examination. The HDRC is chaired by the Deputy Vice-Chancellor (Research) and its membership includes the Deputy Vice-Chancellor (Provost), the Vice-President of Senate, the Dean of Higher Degree Research, Faculty Associate Deans of Higher Degree Research and the Director International HDR Marketing and Development. Two research student members and other Faculty representatives are also on this Committee. The administration of the Committee's business is managed by the Higher Degree Research Office whose manager is secretary to the Committee. Further information is available at the Higher Degree Research Committee website: www.research.mq.edu.au/students/hdrc.

Research Strategy and Policy Committee

The Research Strategy and Policy Committee (RSPC) is a Committee Advisory to the Vice-Chancellor and is chaired by the Deputy Vice-Chancellor (Research). It is comprised of the four Executive Deans of Faculty, the

Vice-President of Academic Senate and the Dean, Higher Degree Research, plus two senior eminent University researchers.

The Committee provides the Deputy Vice-Chancellor (Research) with advice on Macquarie's research strategies and policies, and also assists with recommendations with regards allocation of funding under the University's strategically driven suite of internal research grants schemes.

Further information is available at the Research Strategy and Policy Committee website: www.research.mq.edu.au/policy/committees_networks/research_committee.

Strategic Directions

In 2014, Macquarie University will be 50 years old and aims to be ranked among the top eight research intensive universities in Australia and amongst the top 200 research intensive universities internationally.

The strategic directions for Macquarie's Research and Research Training are guided by the Macquarie University Strategic Plan 2006-2008. An update will be available early in 2009. The mission of the University is to establish a pervasive research culture across all areas of the University, and in particular to achieve internationally and nationally leading research in selected concentrations of research excellence, by maximising the institution's intellectual and physical resources and by maintaining a continuous improvement framework.

The Research Strategic Plan has four major goals based on the vision and targets set out in the Vice-Chancellor's plan for Macquarie@50, which aims to enhance both the scale and quality of our research. The four goals are:

- To establish a pervasive research culture across all areas of Macquarie University.
- To achieve prominence in research in selected concentrations of research excellence internationally and nationally.
- To maximise research outcomes by increasing the number of high quality higher degree research commencing candidates and completions.
- To be a significant contributor to the nation's economic, social and cultural well-being.

Office of the Deputy Vice-Chancellor (Research)

The Deputy Vice-Chancellor (Research) has overall responsibility for all research matters in the University including academic and higher degree research candidature.

The Research Office

The Research Office, attached to the Office of the Deputy Vice-Chancellor (Research), has responsibility for the administrative support of the University's research activities. It provides advice and secretarial/executive support to the University's Research Management Committee, Intellectual Property and Contracts Committee, Animal Care and Ethics Committee, Ethics Review Committee (Human Research), and Biosafety Committee. The Research Office manages the University's internal research funding schemes and external grants and research contracts and agreements. It has a supporting role in the development of policy documents and research initiatives undertaken by the Deputy Vice-Chancellor (Research). The Research Office is located in the Research HUB, Building C5C level 3. Further information is available at www.research.mq.edu.au/researchers.

Higher Degree Research Office

The Higher Degree Research Office (HDRO) is part of the Office of the Deputy Vice-Chancellor (Research) and provides administrative support to the Higher Degree Research Committee. The HDRO is responsible for the administration and management of all aspects of research candidature for higher degree research students from advice to prospective applicants, admission, and progression to the final submission of thesis. The unit also manages scholarship applications and continuing student administration. The HDRO is responsible for the applications, admissions and enrolment of international students as well as local students. It works with the University in the development of policies and procedures to support research candidates and the research-active staff supervising them. The HDRO is located in the Research HUB, Building C5C level 3. Further information is available at www.research.mq.edu.au/students.

Higher Degree Research Guide

The *Higher Degree Research Guide for Candidates and Supervisors* contains information for research candidates and their supervisors on all aspects of research study from commencement, through progression, to completion of candidature. The Guide summarises information on current policies and procedures with general information about the University including relevant support, facilities and contacts. The Higher Degree Research Office website should be regularly consulted for the latest updated information and new or changed policies and procedures. See www.research.mq.edu.au/students.

Policies for Higher Degree Research Candidates

CODE OF HIGHER DEGREE RESEARCH PRACTICE AND CODE OF SUPERVISORY PRACTICE

The Australian Vice-Chancellors' Committee's document *Universities and their Students: Principles for the Provision of Education by Australian Universities 2005* aims to provide "guidelines for maintaining and monitoring academic quality and standards in research higher degrees". This document provides a foundation for Macquarie University's Code of Higher Degree Research (HDR) Practice.

Macquarie's Code of HDR Practice augments the Rules of the University, and the Intellectual Property, Ethics, Equity and Occupational, Health and Safety policies. The Code is incorporated in the *Higher Degree Research Guide for Supervisors and Candidates*.

Macquarie University offers the following postgraduate research degrees: Doctor of Philosophy, Professional doctorates and Master of Philosophy. The rules and specific entry requirements relating to each of these degrees are found in the Postgraduate Rules—Research section of this part of this Handbook.

Responsibilities of the University

1.1 The entry requirements for candidates are contained within the University Degree Rules. Applicants for research degrees should have demonstrated a capacity for quality research through Honors programs, or a research component in a Master's or Postgraduate Diploma program, or through post-graduate research preparation certificates, and/or through previous publication activity. International students have additional language entry requirements which are described in the Higher Degree Research Guide for Supervisors and Candidates.

1.2 In addition to the University's overall requirements, prospective candidates must also comply with Faculty and Departmental entry requirements. These may include prior experience in a specific discipline, the capacity of a Department to provide supervision in the topic area, the ability of the Faculty to provide access to equipment required for the specific research project etc.

1.3 The University provides a Central Commencement Program (CCP) twice yearly and on-line where the University's HDR expectations and candidacy policies are outlined. This program provides an orientation to research and support programs. Each Faculty provides a Faculty Commencement Program (FCP) which supplements the CCP with a program that outlines Faculty and Departmental expectations and support activities. Participation in both of these activities is mandatory for HDR candidates.

1.4 All candidates receive the *Higher Degree Research Guide for Supervisors and Candidates* on enrolment. This provides information regarding the various stages of research candidacy from commencement to examination and details of the support infrastructure of the university. The Higher Degree Research Guide also contains information regarding grievance and appeals processes and harassment. The latest version of the Higher Degree Research Guide is available on the HDRO website: www.research.mq.edu.au/students/current_students/hdrguide.

1.5 The Research Office provides information regarding grant opportunities for HDR candidates, Intellectual Property, Ethics, and Research Management.

1.6 The Higher Degree Research Office (HDRO) provides HDR management and administrative support, including information regarding the application and examination process, and the criteria against which candidate's research activity is assessed. Doctoral research theses are assessed by three external examiners and MPhil theses by two external examiners.

1.7 Macquarie provides support for the development of supervisory staff through the provision of the Colloquium on Research Supervision (CRS) and related research support programs. Macquarie University is reviewing best practice on supervisor registration programs to build on the CRS program.

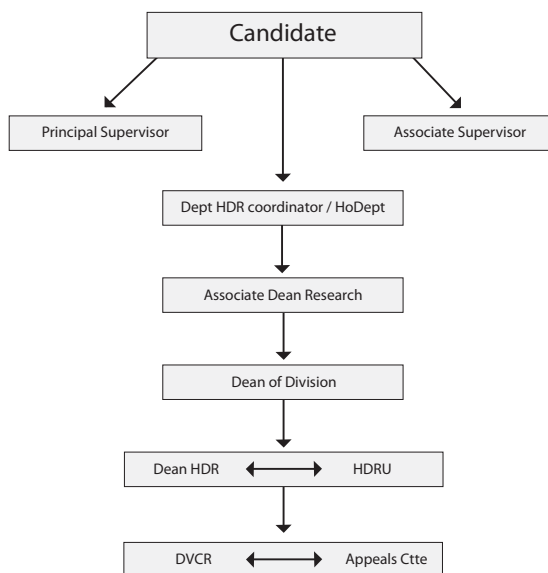
Faculty and Departmental Responsibilities

2.1 Each Head of Department (HoD) ensures that potential candidates fulfil Faculty and Departmental admission requirements. It is their responsibility to ensure that the potential candidate has sufficient research background to undertake the degree, that the department has the space, facilities and resources to undertake the project satisfactorily, and that there is high quality supervision available for the candidate.

2.2 Each research proposal should be considered carefully prior to the potential candidate's admission to ensure that the proposed project is of sufficient breadth and entails high quality intellectual inquiry. The project should be sufficient for the completion of the degree undertaken and care should be taken that potential projects are not so large that they impede the possibility of successful completion within the period of enrolment. There must be a clear relationship between the potential candidate's project and the research interests and capacity of departmental staff.

2.3 The Faculty Dean will ensure that high quality supervision is provided to candidates throughout their candidature. Candidates should have at least a principal supervisor and one other supervisor (associate supervisor, adjunct supervisor or co-supervisor). The principal supervisor has overall responsibility for the candidate's progress, including where a candidate is involved in a large collaborative project with a large panel of supervisors, on or off campus.

Advice and Grievance Structure



2.4 The Faculties and Departments are responsible for facilitating a supportive intellectual environment, e.g. through the provision of workshop/seminar series for candidates to develop their skills at presenting their work and to foster their integration into a cohesive research community.

2.5 Opportunities should be developed for candidates to participate in the research life of the Faculty through interactions with other scholars, visiting scholars and each other.

2.6 Each Department will ensure that conflicts that may arise between supervisor and candidate are quickly solved, and the advice and grievance resolution structure (above) is utilised as appropriate.

2.7 Departments and Faculties will implement the Ethics and OHS policies of the university. Departments and Faculties are required to supplement University Ethics and OHS information in regard to their specific contexts as appropriate and make this information available to their HDR candidates in written and on-line formats.

2.8 HoDs should ensure that the Faculty/Departmental workload formula appropriately acknowledges HDR supervisory activity.

2.9 The University would not normally allow staff who are also currently enrolled as a research candidate to act as supervisor unless the staff member already holds a doctoral degree. In exceptional circumstances a currently HDR enrolled staff member without a doctoral degree may be permitted to be an associate or co-supervisor.

Code of Supervisory Practice: HDR Supervisory Panel

3.1 Each HDR candidate will have a supervisory panel of a principal supervisor and at least one other supervisor to support their research.

The **Principal Supervisor** has the main supervisory responsibility for the candidate. The person must be a full-time or part-time member of Macquarie's academic staff with an appointment of three years or longer and be research active. The principal supervisor is responsible for directing the work of the candidate and for ensuring that the candidate meets all administrative and academic requirements. The Principal Supervisor normally must be located in the same Department in which the candidate is registered. The Principal Supervisor co-ordinates the supervisory team, and is a mentor for any Co-Supervisors.

An **Acting Supervisor** is appointed as a short term replacement for the Principal Supervisor for periods of up to six months only and as the need arises. The title is also applicable to a person who holds administrative supervisory responsibility before the research component of the research degree commences.

The **Associate Supervisor** has a lesser fractional supervisory load than the Principal Supervisor. The Associate Supervisor may be located in another Faculty or Department or may have specific research expertise which is required by the candidate. The Associate Supervisor must be a full-time or part-time member of Macquarie's academic staff with an appointment of three years or longer and be research active.

The **Co-Supervisor** is an academic staff member new to supervision who is gaining experience in and knowledge of supervisory practices. Staff with appointments of less than three years, including Casual academic staff, may undertake this role.

The **Adjunct Supervisor** is an external supervisory appointment, including Honorary staff and Emeritus Professors. An Adjunct Supervisor has special expertise required for the candidate's project (e.g. as an Industry partner for an APAI candidate, or an overseas University partner). Adjunct Supervisors are entitled to remuneration for their supervisory contribution (see the HR policy on Adjunct Supervision).

3.2 All supervisors must be approved by the Faculty Dean and either hold a doctoral degree or be deemed by Macquarie University to be equivalent to holding a doctoral degree.

3.3 Supervisors should have an understanding of the university's current HDR rules, policies and guidelines so that accurate advice and support is given to candidates. The supervisor's primary role is to provide academic support throughout the candidature to enable the candidate to achieve a high standard of research activity and output.

3.4 The principal supervisor should support the candidate to complete a thesis through:

- planning the research program;
- project management strategies where transparent goals and expectations for the research are articulated;
- exposition of relevant standards for the research;
- the identification of appropriate resources; and
- advice on authorship and co-authorship conventions especially as they relate to single author/co-authored papers for a thesis by publication and in journal article format, which is the University's preferred thesis model.

3.5 Supervisors are each responsible for ensuring that:

- the research project is planned appropriately with the candidate through an evaluation of the proposed research topic;
- the scope of the research is sufficient for the degree;
- the supervisory panel has the necessary theoretical, methodological and disciplinary knowledge to support the research; and
- the candidate obtains any necessary Ethics approvals to conduct the research.

3.6 Supervisors should negotiate an agreement on meeting frequency with the candidate, both as a panel and individually, which is to be formally evaluated at 6 monthly intervals to reflect the changing priorities of the particular project and candidacy stages.

3.7 The outcomes of formal supervisory meetings (such as the agreed aspects of work to be undertaken between sessions) should be recorded in a manner that facilitates the continuing progress of the candidate (e.g. email records).

3.8 As a general guide, the principal supervisor and candidate should meet (or be in equivalent contact) at least fortnightly and usually more frequently in the first year of research, in addition to any laboratory or bench consultations.

3.9 Supervisors should monitor carefully the performance of the student relative to the standard required for the degree, and ensure that inadequate progress or work below the standard generally expected is brought to the candidate's attention and documented, and the student is given an opportunity to improve the quality of the research. The supervisors should help with developing solutions to problems as they are identified. Continuing unsatisfactory progress should be reported to the Faculty Dean, and formally advised to the student.

3.10 Supervisors should give timely feedback on written work, focusing on the content and style of the thesis drafts.

3.11 At the time of submission supervisors should certify that the thesis is properly presented and conforms with the university's rules for submission of theses. Supervisors should confirm that the thesis is at a standard suitable for examination.

3.12 The examination process – including the selection of examiners for the thesis – is outlined in the Higher Degree Research Guide. Supervisors should check the HDRO website regularly to familiarise themselves with the submission process.

3.13 Supervisors should participate in the university staff development programs for research supervision.

Responsibilities of Higher Degree Research Candidate

4.1 Prior to an application for admission being made, prospective candidates should contact researchers in their area of interest to determine the feasibility of their research project. Admission into the degree is also dependent on the candidate's academic qualifications for postgraduate research, and the availability of quality supervision in the area supported by appropriate infrastructure and resources.

4.2 HDR candidates should undertake research activity as agreed with their principal supervisor and panel related to their research project.

4.3 Candidates should become familiar with the HDR rules and expectations as set out in the degree Rules, the Higher Degree Research Guide and their Faculty and Departmental publications.

4.3 Candidates are responsible for:

- being proactive in setting up meetings with their supervisory panel and individual supervisors (either face to face, or using electronic media);
- becoming independent researchers with supervisory guidance resulting in the self-regulation of research activity;
- regular formal and informal reviews of progress with supervisors;
- providing formal progress reports as required, through the principal supervisor, at periods specified by the university;
- research quality and practices, safety, personal ethical responsibility;
- developing a research budget in consultation with the supervisor; and
- acquiring information about relevant research funding schemes.

4.4 Candidates should be aware of grievance resolution procedures for research related issues.

4.5 Candidates who are undertaking a thesis including published work should be aware of the authorship and co-authorship conventions of their discipline. In addition, candidates and their supervisors should adhere to the Vancouver Protocol which states that:

“Authorship credit should be based only on substantial contributions to 1) conception and design, or analysis and interpretation of data; and to 2) drafting the article or revising it critically for important intellectual content; and on 3) final approval of the version to be published.

Conditions 1, 2, and 3 must all be met. Participation solely in the acquisition of funding or the collection of data does not justify authorship. General supervision of the research group is not sufficient for authorship.”

4.6 Candidates should participate actively in the research life of the Department and the Faculty.

4.7 The primary responsibility of the candidate is to work in collaboration with their supervisors to produce a thesis which fulfils the degree requirements and is presentable according to the accepted practices of the University.

INTELLECTUAL PROPERTY

The University's Intellectual Property Policy covers all intellectual property developed by staff and higher degree research students. The University's policy includes rights in respect of patents, copyrights, plant variety rights, registered designs, confidential information and trade secrets. The University recognises the rights of students to intellectual property (IP) generated by them during their course of study at the University. At enrolment new research students are requested to assign IP rights to the University and agree to the University managing on the student's behalf such intellectual property arising from the research programs for the benefit of all concerned. This means that intellectual property in the form of patentable material can be commercialised to the benefit of all inventors and gives the student equal rights with members of the academic staff.

Further information is given to students with their enrolment package and the full University policy is available at www.research.mq.edu.au/students/ipissues.

PLAGIARISM

The Academic Senate in June 2001 approved policies and procedures to ensure that the University takes a consistent and equitable approach to plagiarism. See page 137 of this Handbook for a summary outline of the policy on plagiarism, and see www.student.mq.edu.au/plagiarism for the full plagiarism policy.

The policy is currently being updated and a new policy and set of procedures will be available at the University Policy Central website www.mq.edu.au/policy.

Admission

Restrictions on Admission

The University reserves the right to regulate the registration of candidates for higher degrees by research to ensure that the number of postgraduate students admitted will not exceed the number for which adequate supervision and facilities are available.

Applications for Admission

Applicants for admission to candidature for higher degrees by research must satisfy the general conditions specified in the Rules set out in this *Handbook of Postgraduate Studies*. It should be noted that for admission to some professional Doctorates, applicants must have professional or other experience.

Further details of admission requirements for individual Higher Degree Research programs are given in the Programs of Study—Research section of this part of this Handbook. Enquiries should be directed to the relevant Department, Centre, or Graduate School.

English Language Requirements

Applicants who are relying for admission on qualifications gained in countries where English is not the main spoken language are required to demonstrate proficiency in English language. Applicants should arrange for their own English language proficiency test. The University accepts both the IELTS and TOEFL test as proof of English language proficiency. The following scores have been approved as the minimum entry requirements for English language proficiency for higher degree research applicants:

- Test of English as a Foreign Language (TOEFL)
 - in computer-based TOEFL: an overall of 237 with no less than 19 in Listening, 19 in Reading, 25 in Structure/Writing and 5.0 in the Writing Examination; or
 - in paper-based TOEFL: an overall of 580 with 53 in Listening, 52 in Reading, 59 in Structure/Writing and 5.0 in the Writing Examination; or
 - in iBT - Internet-based TOEFL: an overall score of 92 with 23 in Speaking, 18 in Listening, 22 in Writing and 17 in Reading.
- International English Language Testing Service (IELTS)
 - in academic version: an overall of 6.5 with minimum of 6.0 in each band.

Scholarship applicants requiring to demonstrate English language proficiency are expected to achieve:

- in computer-based TOEFL: an overall score of 250 with 19 in Listening, 22 in Reading, 26 in Structure/Writing and 5.0 in the Writing Examination; or
- in paper-based TOEFL: an overall score of 600, with 53 in Listening, 56 in Reading, 61 in

Structure/Written Expression and 5.0 in the Writing Examination; or

- in iBT - Internet-based TOEFL: an overall score of 100, with 25 in Writing and 23 in all other sections; or
- in Academic version of IELTS: an overall score of 7.0 with no less than 6.0 in each band.

While both the IELTS and TOEFL test are acceptable for meeting the University's English language requirements, the requirements of the Australian Department of Immigration and Citizenship may differ. It is recommended that applicants contact their nearest Australian Embassy or High Commission in order to ascertain the English language requirements, including the type of test required, for obtaining a student visa. See the following websites for further information:

www.immi.gov.au/contacts/overseas

www.immi.gov.au/students/students/chooser/574.htm

Further information is also available at:

www.research.mq.edu.au/students/new_students/criteria.

Please note: Some Departments and Graduate Schools require higher than the above minimum scores for entry. Please check the admission information for the program you are applying for.

A range of intensive English courses including academic skills is available at Macquarie to prospective domestic and international research students who do not meet the approved University English language requirement. Courses are offered on-campus by the Centre for Macquarie English (www.cme.mq.edu.au) which has the English Language Courses for Overseas Students (ELICOS) accreditation.

International HDR Candidates

Persons who are not Australian or New Zealand citizens or permanent residents of Australia should consult the Higher Degree Research Office website at www.research.mq.edu.au/students/new_students/criteria for information and application forms for higher degree research programs. Applications from international students must be accompanied by documentary evidence confirming all educational qualifications. Documents not in English must be accompanied by certified translations into English. Proof of English language proficiency is required for applicants whose academic qualifications were taken in a country where English is not the main spoken language – please refer to the previous section. Applications for international students are processed continuously throughout the year.

Further enquiries may be addressed to:

Higher Degree Research Office
Research HUB, Building C5C level 3
Macquarie University, NSW, 2109

Phone: +61 2 9850 9781 or
+61 2 9850 9784 or
+61 2 9850 7275

Fax: +61 2 9850 6198
Email: hdrfuture@mq.edu.au

Key Dates for Prospective Students

Applications for admission to candidature are open throughout the year, however if you wish to be considered for a scholarship you must ensure your completed application form and associated supporting documentation is submitted to the Higher Degree Research Office (HDRO) by the scholarship closing date. Please refer to the HDRO scholarships website for scholarship closing dates: www.research.mq.edu.au/students/scholarships.

31 October 2008 — closing date for domestic applications for entry into higher degree research programs if also intending to apply for a scholarship in the main round

31 October 2008 — closing date for Australian Postgraduate Award scholarship applications commencing first half-year 2009

31 January 2009 — closing date for domestic applications for admission for entry into higher degree research programs in first half-year 2009, in time to attend the Central Commencement Program on campus

19 February 2009 — Orientation Program (on campus) for new international research candidates commencing in first half-year 2009

20 February 2009 — Central Commencement Program (on campus) for all new (domestic and international) research candidates commencing in first half-year 2009

23 February 2009 — academic year commences for higher degree research candidates who are enrolled in first half-year coursework units

15 April 2009* — closing date for applications for entry into the Doctor of Applied Linguistics and Doctor of Professional Communication programs commencing in second half-year

29 May 2009 — closing date for applications for entry into the Doctor of Psychology and Combined PhD/Master Coursework in Psychology programs commencing in second half-year 2009

30 July 2009 — Orientation Program (on campus) for new international research candidates commencing in second half-year 2009

31 July 2009 — Central Commencement Program (on campus) for all new (domestic and international) research candidates commencing in second half-year 2009

* Date to be confirmed. Please check with the Department website in early 2009.

Offers of Admission to Candidature

Offers of admission for domestic applicants to candidature in research programs for first half-year, in most cases, will be made by the end of January 2009. Applicants who apply in October and November are generally notified by the end of December. Please note the key dates above. Further offers of admission to research programs may be made at other times at the discretion of the Departments and the HDRO. International students' applications and offers of enrolment are made throughout the year.

Tuition Fees

All international candidates and domestic candidates enrolled in fee-paying higher degree research programs are required to pay tuition fees. New candidates are advised of the fees required to be paid in their letter offering admission to candidature.

International and domestic fee-paying candidates admitted to programs in 2009 have their tuition fees indexed annually.

All higher degree research student should refer to the information about payment of fees on page 132 of this Handbook.

DOMESTIC CANDIDATES

Research Training Scheme

The Commonwealth Government's Research Training Scheme (RTS) funds Australian universities for a number of student places each year to support research training for students undertaking higher degree research (HDR) programs. The Scheme applies to students who are Australian citizens, permanent residents and New Zealand citizens. These students, referred to as having an 'RTS place', are exempt from payment of student tuition fees for units undertaken as part of a HDR program. The Scheme does not provide a living allowance or stipend.

There is no need to apply for an RTS place as they will automatically be awarded to eligible HDR candidates in accordance with the RTS and Macquarie University guidelines. The following HDR programs are currently covered by the Scheme and are available to eligible domestic candidates in 2009:

- Doctor of Philosophy
- Master of Philosophy
- Doctor of Psychology (all strands)
- Combined PhD/Coursework Masters in Psychology (all strands)

The RTS Guidelines impose specific conditions on universities and students. It is expected that candidates will submit their thesis within the RTS funded period, which is a maximum of four years full-time equivalent study if undertaking a Doctorate degree by research and two years full-time equivalent study if undertaking a Masters by research degree.

Fee-paying Domestic Programs in 2009

There are currently three tuition fee-paying HDR programs available to domestic HDR candidates:

- Doctor of Business Administration
- Doctor of Applied Linguistics
- Doctor of Professional Communication

Candidates enrolled in these professional doctoral programs progress into their research (or time-based) component of their program immediately after satisfactorily completing the required coursework units.

FEE-HELP Loan Scheme for Domestic HDR Candidates

Domestic HDR candidates enrolled in a tuition fee-paying HDR program may be eligible to access FEE-HELP loan assistance from the Commonwealth Government to assist in paying their tuition fees.

FEE-HELP is a loan scheme that assists eligible students to pay their tuition fees. FEE-HELP can cover all or part of a student's tuition fees. Over their lifetime a student may borrow through FEE-HELP an amount up to the FEE-HELP limit to pay their tuition fees.

A FEE-HELP loan is repaid through the Australian Taxation Office. You must provide your Tax File Number to the University by the census date. Repayment will commence once your income is above the minimum threshold for compulsory payment. For 2009 the threshold is set at \$41,594.

You are eligible for FEE-HELP assistance for a unit of study if you:

- have received an offer of a domestic tuition fee-paying place for your course of study;
- enrol in the unit on or before the census date and remain enrolled at the end of the census date;
- meet the citizenship or residency requirements which means you are either:
 - o an Australian Citizen, or
 - o the holder of a permanent humanitarian visa who will be resident in Australia for duration of the unit;
- are not Commonwealth supported in relation to that unit;
- submit your tax file number (TFN) to the higher education provider;
- have completed, signed and submitted a valid Request for Fee-Help assistance (CAF) form; and
- have not exceeded the FEE-HELP limit (in 2009 the limit will be \$83,313 for all courses).

An information booklet and the form to apply for FEE-HELP will be sent out with the enrolment material.

To obtain further information about FEE-HELP please see www.reg.mq.edu.au/undergrad/current/feescharges and refer to the website for the Department of Education, Employment and Workplace Relations, www.goingtouni.gov.au.

Tuition fees for Domestic Students 2009

Program	Annual Fee 2009 (AU\$)*	Candidature Length
All Faculties		
Doctor of Philosophy (PhD)	RTS§	4 years
Master of Philosophy (MPhil)	RTS§	2 years
Faculty of Human Sciences		
Combined PhD/Master in Psychology (coursework and research components)	RTS§	4 years
Doctor of Applied Linguistics		3 years
- Coursework component (\$ per credit point)	500	
- Research component (annual fee)	15,750	
Doctor of Professional Communication		3 years
- Coursework component (\$ per credit point)	500	
- Research component (annual fee)	15,750	
Doctor of Psychology - all strands	RTS§	3 years
Macquarie Graduate School of Management		
Doctor of Business Administration (DBA)		3 years
- Coursework component (\$ per credit point)	550	
- Research component (annual fee)	17,600	
- Total DBA program fee for 3 years	52,800	

§ The research training scheme (RTS) is a Commonwealth supported research training scheme for domestic higher degree research students undertaking Doctor of Philosophy and Master of Philosophy programs. Eligible domestic candidates enrolled in these programs are awarded RTS places and are not liable for tuition fees. Further information about the Research Training Scheme is available from the Department of Education, Employment and Workplace Relations website www.dest.gov.au/sectors/research_sector/programmes_funding/programme_categories/professional_skills/research_training_scheme.htm

* Students should be aware that fees are indexed and are expected to change from year to year. The University reserves the right to vary, without notice, any information relating to fees applicable to enrolment in any course or unit of study.

Tuition fees for International Students 2009

Program	CRICOS Code	Candidature Length	Annual Fee 2009 (AUS)*
Faculty of Arts			
Doctor of Philosophy (PhD)	001403F	4 years	20,520
Master of Philosophy (MPhil)	056667E	2 years	20,520
Faculty of Business and Economics			
Doctor of Philosophy (PhD)	021502D	4 years	20,520
Master of Philosophy (MPhil)	056664G	2 years	20,520
<i>Macquarie Graduate School of Management</i>			
Doctor of Philosophy (PhD)	037298E	4 years	26,250
Master of Philosophy (MPhil)	056665G	2 years	26,250
Doctor of Business Administration (DBA)	027542C	3 years	
- Coursework component (\$ per credit point)			645
- Research component (annual fee)			20,640
- Approximately total DBA program fee for 3 years (subject to indexation)			61,920
Faculty of Human Sciences			
Doctor of Philosophy (PhD) in the Department of Linguistics	064238D	4 years	20,520
Master of Philosophy (MPhil) in the Department of Linguistics	064240K	2 years	20,520
Doctor of Philosophy (PhD) in the Institute of Human Cognition and Brain Science	064239C	4 years	26,250
Master of Philosophy (MPhil) in the Institute of Human Cognition and Brain Science	064241J	2 years	26,250
Doctor of Philosophy (PhD) in the Department of Psychology	064239C	4 years	26,250
Master of Philosophy (MPhil) in the Department of Psychology	064241J	2 years	26,250
Doctor of Philosophy (PhD) in all other Departments	064238D	4 years	20,520
Master of Philosophy (MPhil) in all other Departments	064240K	2 years	20,520
Doctor of Applied Linguistics in the Department of Linguistics	Not applicable	3 years	
- Coursework component (\$ per credit point)			650
- Research component (annual fee)			20,520
Doctor of Professional Communication in the Dept of Linguistics	Not applicable	3 years	
- Coursework component (\$ per credit point)			650
- Research component (annual fee)			20,520
Doctor of Psychology (all strands)	040616C	3 years	26,250
Combined PhD/Master in Psychology (all strands)	027361G	4 years	26,250
<i>Macquarie School of Advanced Medicine</i>			
Doctor of Philosophy (PhD)	064239C	4 yrs	26,250
Master of Philosophy (MPhil)	064241J	2 yrs	26,250
Faculty of Science			
Doctor of Philosophy (PhD) in the Department of Statistics	064572A	4 years	23,000
Master of Philosophy (MPhil) in the Department of Statistics	064241J	2 years	23,000
Doctor of Philosophy (PhD) (in all other Departments)	001404E	4 years	26,250
Master of Philosophy (MPhil) (in all other Departments)	056670K	2 years	26,250

* Students should be aware that fees are indexed and are expected to change from year to year. The University reserves the right to vary, without notice, any information relating to fees applicable to enrolment in any course or unit of study.

INTERNATIONAL CANDIDATES

All programs for international students are fee-paying programs. New international students, excluding scholarship holders, pay a tuition commencement fee when accepting their offer prior to arrival and enrolment at Macquarie. This fee is an advance on the first half-year tuition fee. In addition to the commencement fee, new international candidates are also required by the Department of Immigration and Citizenship to pay for Overseas Student Health Cover for their health insurance while studying in Australia under a student visa. Payment of the commencement fee and OSHC enables the University to issue a Confirmation of Enrolment for international students to apply for their final student visa. After the initial enrolment period continuing international candidates are charged the indexed yearly rate.

FAILURE TO MEET FINANCIAL LIABILITIES

Students are required to meet their financial liabilities. Students who are indebted to the University for amounts totalling more than \$200 will, following due warning, have their enrolment cancelled in accordance with the University Fee Rules.

Enrolment

New Student Enrolment

New higher degree research (HDR) candidates complete enrolment formalities at the beginning of candidature on an agreed commencement date. Enrolment information and instructions are sent to all new HDR candidates after acceptance of the offer of admission. Domestic candidates normally complete the enrolment process by mail. International candidates are normally required to attend Macquarie University in person to complete their enrolment registration, which is accompanied by an orientation briefing. International candidates can confirm their travel arrangements to Australia when all aspects of their candidature and scholarship, if awarded, are confirmed in writing by HDRO. At enrolment, new research students are requested to assign intellectual property rights to the University and agree to the University managing on the student's behalf such intellectual property arising from the research programs for the benefit of all concerned.

Campus Card

When enrolment is completed, all new candidates are issued with a photo-identity card, which should be carried during attendance at the University and shown on request. The card must be presented when borrowing books from the Library, applying for transport concessions, using the services of the Careers Development Office and, where appropriate, when sitting for examinations.

Continuing HDR candidates are provided with an update for their student identity card early each year. Candidates should note that the number on the card is their Macquarie University student identification number, which must be quoted in all correspondence to the University. A candidate who loses or damages the identity card should complete an application form for a new card obtainable from the Library.

Continuous Enrolment

Candidature in a HDR program is continuous after the initial enrolment. Continuing HDR candidates do not need to attend registration formalities to re-enrol in their program and research unit. Candidates enrolled in professional doctorates and combined coursework and research programs with a coursework component or candidates who are required to enrol in additional units, such as seminar units or specific coursework units will need to complete a *Change of Program* form to register in the coursework components of their program or in any additional units. see www.research.mq.edu.au/students/forms.

Re-admission after an Absence

A candidate who has previously withdrawn from a higher degree research program will be required to apply for re-admission to candidature. Application procedures for re-admission after an absence are the same as for admission for new candidates seeking their first higher degree research enrolment at Macquarie. Assessment of applications for re-admission after an absence will be made in accordance with the University admission policies at the time and the government Research Training Scheme guidelines, and will take account of the availability of adequate supervision. Candidates on official leave of absence will be automatically re-enrolled at the end of the period of approved leave.

Candidature Progression

Academic Progress

Candidates in higher degree research programs are expected to maintain satisfactory progress in their programs of study. A mandatory commencement program for new research candidates must be completed satisfactorily and an annual progress report for continuing students monitors academic progress. Under the Doctoral Degree Rules and Rules for the Degree of Master by Research, if a candidate's progress in the prescribed program of study is unsatisfactory, the Faculty Dean will ask the candidate to show cause as to why candidature should not be terminated.

Commencement Programs

The University's commencement program for newly enrolled higher degree research students consists of two compulsory components:

- The central commencement program for all new candidates, which is usually scheduled in the week before the commencement of classes, provides an introduction to important policies, facilities and services for research candidature. Information covered in the central program includes an outline of services and resources offered by the University, rights and duties as a research student and a member of the University community, Intellectual Property, research ethics, progression and completion information.
- The second component is delivered within the Faculty or Department and will be assessed. The Faculty program will be structured according to the study discipline and may include training in skills relating to laboratory practice, statistical methods, information acquisition, research presentation and literature searches.

A full-time research candidate will be expected to satisfactorily complete the commencement program within the first six months of candidature and will then gain approval to continue on with the research program. For part-time candidates, satisfactory completion of this program within the first 12 months is required.

Annual Progress Reports

The Annual Progress Report (APR) is an important and formal tool for the University and its Faculties to monitor and evaluate each research candidate's progress. Participating in the APR process and completion of the Report is a mandatory requirement of higher degree research (HDR) candidature.

Full details of the APR procedures are available from www.research.mq.edu.au/students/current_students/annual_reports.

The process should be viewed as a positive undertaking. It provides an opportunity for the candidate and supervisor(s) to critically reflect on the progress in the candidate's research degree program during the current year and on intended research directions in the year ahead so as to ensure a quality and timely completion to the research program.

The supervisor reports on the progress of a higher degree research candidate at least once a year in accordance with Rule 6(1) of the Doctoral Degree Rules and Rules for the Degree of Master by Research. The recommendation of progress made by the Faculty is reviewed and noted by the Higher Degree Research Committee. A recommendation of satisfactory progress will enable the research degree enrolment to continue. Some Faculties have instituted more frequent progress reviews. All enrolled candidates are notified in early October of the official commencement of the annual progress review. The Report must be completed by the candidate and returned to the Faculty by early November. The supervisor is required to comment on the candidate's progress and submit the report to the Faculty Executive Dean or nominee for a final recommendation. The report is expected to accurately reflect the candidate's progress and record any dif-

ficulties encountered which may necessitate a variation in the candidature. It should also record the frequency and type of contact between the candidate and supervisor. Completed reports are returned to the Higher Degree Research Office (HDRO) with recommendations regarding any follow-up action such as further review or show cause procedures according to Rule 6. Reports are retained on the central student file and a copy will be returned to the candidate for information at the end of the year.

Unsatisfactory Academic Progress

If candidates are reported as making unsatisfactory progress in the APR or at any other time deemed necessary the Faculty Executive Dean may recommend that the student be required to show cause as to why candidature should not be terminated. Under Rule 6 all cases to show cause will be considered and the Executive Dean may then recommend conditions of continued enrolment or confirm the termination. Candidates excluded as a result of this process may appeal to the Higher Degree Research Committee which may dismiss the appeal or permit the student to re-enrol with conditions.

Changes of Program of Study

All changes of program and details of candidature for higher degree research candidates should be discussed with the candidate's supervisor or the Associate Dean, Higher Degree Research located in each Faculty. All changes must be notified to the HDRO in writing by completing the appropriate form with any required supporting documentation and obtaining the required signatures from the Department and Faculty. The *Change of Program Request* form is required for the following changes:

- withdrawal from the program;
- change of attendance from full-time to part-time or vice versa;
- addition or discontinuance of required coursework units and additional units;
- addition or change of tentative thesis title.

Separate forms for the following requests for changes to candidature are required:

- official leave of absence from candidature and suspension of award for scholarship holders;
- transfer of candidature from one degree to another or from one Faculty or Department to another;
- temporary period of overseas research;
- addition or change of principal or acting supervisor, associate supervisor, adjunct supervisor or co-supervisor.

See www.research.mq.edu.au/students/forms.

Withdrawal from Candidature

Total withdrawal from a higher degree research program must be notified in writing on the *Change of Program* form with the appropriate signatures of supervisor and Faculty Executive Dean or nominee. The date of withdrawal from candidature is the date of receipt in the

HDRO of the completed notification form. Candidates who withdraw and then wish to return to complete their candidature and submit a thesis will need to lodge a new application for admission to candidature.

Scholarship holders considering withdrawal are advised that the HDRO Scholarship Manager is available to discuss their enrolment options according to the scholarship conditions of award. Scholarship holders must notify HDRO in writing of their withdrawal from their scholarship as well as completing the *Change of Program* form.

The census dates for withdrawing from coursework units or additional units required in the research program, except in the case of candidates enrolled in the coursework component of the Doctor of Business Administration offered by Macquarie Graduate School of Management, will be 31 March and 31 August. If a higher degree research candidate discontinues a postgraduate coursework unit after the coursework census date, the candidate's academic record will record a "W" for the unit. It should be noted that withdrawal for fee paying candidates from coursework units after the census date may have implications for a student's liability for tuition fees.

Candidates are advised to consult the Macquarie University website for information on fees and the University census dates at www.mq.edu.au/reforms.

Change of Attendance

Candidates who wish to change from full-time to part-time candidature or from part-time to full-time candidature must request the change in writing on the appropriate form. Candidates should discuss the change with their supervisor and on the basis of their commitments outside of study a recommendation for change will be made to the HDRO. Changes will be recorded for half-year periods of candidature, i.e. from 1 January to 30 June or 1 July to 31 December.

Notification of changes to attendance must be received before the census date for each half-year for changes to candidature from the beginning of the half-year enrolment period.

Candidates are advised to refer to the HDRO website for information about census dates and for changes to attendance at: www.research.mq.edu.au/students/new_students/important_dates.

Changes to Candidature Requiring Special Approval

Applications from research candidates for the following changes to candidature require special approval and additional supporting documentation:

- leave of absence;
- transfers between degrees and Departments or Faculties;
- seeking to upgrade to a PhD degree.

Full reasons for such applications must be submitted to the HDRO with the completed appropriate form,

endorsement signatures and supporting documentation. Approval is granted after consideration of the individual case by the Higher Degree Research Committee on the recommendation of the Executive Dean of the Faculty in which the candidate is registered.

Candidates are advised to refer to the HDRO website at www.research.mq.edu.au/students/forms to access the appropriate forms.

Leave of Absence

Leave of Absence (LOA) is a period of non-enrolment during which students are not be able to access University facilities (such as laboratories or the University Library) or be covered under University insurance. Once the leave ends, candidates are automatically re-enrolled and any applicable tuition fees are charged at pro-rata rates.

LOA may not be taken within the first twelve months of candidature, whether full-time or part-time, and is only granted for periods of between two months and six months. LOA may be approved on the grounds of compassionate, compelling or exceptional circumstances, which may include: serious illness or injury; pregnancy; involvement in a serious car accident; or illness or bereavement of close family members. All cases are accessed by the Higher Degree Research Committee.

Research candidates are required to submit the appropriate form together with supporting documentation when requesting LOA as it is not granted automatically and each application is individually assessed. These documents include a statement of the reasons for the request, a statement of research progress to date, and a supporting statement for the Leave of Absence from the Supervisor.

LOA must be applied for in advance, unless in cases of "exceptional circumstances" where it may be impossible to advise of the need for such leave due to major illness or similar factors. The HDRO will advise applicants of the outcome of their application.

International HDR candidates who are on a student visa need to be aware that LOA is generally not permitted due to the conditions of the visa. Under the *Education Services for Overseas Students Act 2000*, suspension of study for international students is not allowed unless in exceptional circumstance such as medical grounds. International students granted LOA will be reported to the Department of Immigration and Citizenship (DIAC) as their enrolment ceases for this LOA period. Candidates wishing to stay in Australia during this approved LOA period will require approvals from DIAC in writing.

Transfers

HDR candidates must apply to transfer from one research degree, Department or Faculty to another by completing the *Transfer Application* form. Transfers between professional doctorates and PhD programs are not permitted.

Applications for transfers/conversions will be received for consideration at any time in the year but are effected from

the commencement of the next half-year. Half-years are from 1 January to 30 June and from 1 July to 31 December.

Candidates Seeking to Upgrade to a PhD Degree

Students in a Master Degree by research may be permitted to upgrade their candidature to a Doctorate in some Departments of the University. Applicants applying to upgrade/transfer to a higher degree by research who do not meet the prescribed admission requirements for that program must have completed work at a level acceptable to the Higher Degree Research Committee normally extending over a period of one year full-time or two years part-time. The Committee requires an assurance that the candidate is producing work at the appropriate level. Candidates must have completed a minimum of one year full-time (or the equivalent part-time) and no longer than one and a half years full-time (or the equivalent part-time). Candidates who transfer or upgrade from a Master Degree by research to a Doctorate will be limited to a maximum of four years' full-time study or eight years' part-time study, including the candidature for the Master Degree.

The final date for applications for transfer must be submitted by the census date of the half-year to be effected for that half-year period.

Temporary Period of Overseas Research

HDR candidates who wish to undertake fieldwork, data collection or other research at an overseas location must seek approval on the appropriate form for periods longer than four weeks. Applications must be made four to six weeks prior to the departure date.

Scholarship holders must comply with the conditions of their award regarding approval for overseas research and must submit three-monthly reports. Requests for approval for overseas research must be lodged with the HDRO.

Candidates are advised to refer to the HDRO website to access current overseas research procedures and appropriate forms at:

www.research.mq.edu.au/students/current_students/hdrguide
www.research.mq.edu.au/students/forms.

Change or Name or Address

It is the responsibility of all students to maintain accurate contact details on the University student system. Candidates are required to update their personal information in student portal through eStudent at: <https://student1.mq.edu.au>. Failure to do so could lead to important correspondence or course information not reaching a candidate. The University cannot accept responsibility if official communications fail to reach a candidate who has not notified changes of address and contact details.

Candidates who change their name during the period of candidature (for example, through marriage) and who wish to have the University records amended should write to the HDRO providing a specimen of both former and current signatures and documentary evidence of the change of name. Candidates are advised to consult the Department of Foreign Affairs and Trade website for information on what documentary evidence is required: www.passports.gov.au/Web/Requirements/IdentityDocuments.aspx.

Assessment

EXAMINATIONS FOR COURSEWORK UNITS

Higher degree research candidates who are required to sit for examinations for coursework components or additional coursework units are governed by the general Rules for the Conduct of Examinations for all students both undergraduate and postgraduate. Information on these policies is outlined in the Student Information—Coursework section of this Handbook on page 134.

HIGHER DEGREE RESEARCH THESIS

Higher degree research candidates pursue an advanced program of study which culminates in a thesis that embodies the results of the candidate's original research and investigations. A summary of the procedures concerning the submission of theses is outlined below. Candidates must consult the complete information before commencing to write their theses.

Full information relating to the preparation and assessment of theses is available at www.research.mq.edu.au/students/thesis_examination/research_candidates.

Thesis Preparation

The guidelines for thesis preparation include detailed information on the following:

- the prescribed maximum number of words depending on the discipline;
- general presentation including instructions for spacing, margins, inclusion of diagrams, figures and tables as well as information on the order of the preliminary pages including title, contents table, summary and the requisite signed statement that the work has not been previously submitted;
- suggestions on referencing; policies on copyright, acknowledgement and legal liability;
- detailed information on the binding of the thesis and the completion of the appropriate submission forms.

Submission

The University requires that for doctoral degrees four copies of the thesis are submitted to the Higher Degree

Research Office. Three thesis copies are required for a Masters degree examination. Candidates are strongly advised to arrange additional copies bound for their personal use, for examiners on request and as security against accidental non-return of the thesis during the examination process. A digital copy of the thesis must be accompanied by the required signed documentation, available at www.research.mq.edu.au/students/thesis_examination/research_candidates.

Two forms must accompany the thesis at submission:

- *Author's Consent* form; and
- *Submission of HDR Thesis for Examination* form.

It is the candidate's responsibility to complete details of the program on these forms and obtain the appropriate signatures. In cases where a supervisor is unable or unwilling to sign the certificate, the thesis should still be submitted. A report of the circumstances should be submitted by the supervisor to the Higher Degree Research Committee, which will determine an appropriate course of action.

Research Thesis by Publication(s)

Theses may include relevant papers (including conference presentations) published, accepted, submitted or prepared for publication during the period of candidature, together with a comprehensive and critical introduction and an integrative conclusion. These papers should form a coherent and integrated body of work, which should be focused on a single project or set of related questions or propositions. These papers may be single author or co-author – for co-authored papers the candidate must specify his/her specific contribution. The contribution of others to the preparation of the thesis or to individual parts of the thesis should be specified in the thesis acknowledgments and/or in relevant footnotes/endnotes. It is not necessary to reformat published works in a thesis. For full information please refer to the HDRO website at: www.research.mq.edu.au/students/current_students/thesis_examination/research_candidates.

Library Copy

The University regards as important that there should be ready access through the University Library to higher degree theses. One copy of each submitted thesis is stored in a locked area within the Library. Enquiries concerning requests for access to theses are made to the Library Information Desk.

The University in special cases may restrict access to any material which has been made available on the confidential basis for use in the conduct of the research work or the preparation of the thesis. A candidate may apply to the Higher Degree Research Committee for a moratorium on the use of the thesis until after the expiry of an agreed period (ordinarily no longer than one year).

Procedures for Examination of a Thesis

Approximately three months before the expected date of submission of the thesis, the supervisor(s) and the candidate, together with the Executive Dean of Faculty (or nominee), prepare a list of potential examiners.

After the Higher Degree Research Committee has determined the final selection from the nominations and the thesis has been submitted, the thesis is dispatched to the approved examiners. The examiners' reports with the supervisor's comments are referred to the Higher Degree Research Committee. The Committee may recommend to the next meeting of Academic Senate that the degree be awarded, that correction or revision is required, or that the degree not be awarded. Candidates are notified of Academic Senate's decision to award or not award the degree following the meeting of Academic Senate. Further information on the examination process is outlined at www.research.mq.edu.au/students/current_students/thesis_examination/research_candidates.

Revise and Resubmit

Candidates may be required to resubmit their thesis for re-examination and must be enrolled while undertaking the revision. The enrolment period will begin no later than three months from the date of the decision by the Higher Degree Research Committee. Resubmission is required within one year from the date of the decision of the Higher Degree Research Committee. Candidates who choose not to proceed with the resubmission will be deemed to have failed to satisfy requirements for the award of the degree. Further information on the revision and resubmission of a thesis is available at www.research.mq.edu.au/students/current_students/thesis_examination/research_candidates.

Appeals

As part of its commitment to quality in the provision of higher degree research training, Macquarie University offers appeal procedures for students dissatisfied with the outcomes of assessment, or of certain other processes.

Candidates enrolled in higher degree research programs (Doctorates and Master by Research degrees) have the opportunity to appeal to the Higher Degree Research Appeals Committee (HDRAC) against a range of determinations relevant to candidature, scholarships, and thesis examinations under the provisions in the Degree Rules and according to established protocols as described below. Appeals will only be considered if submitted within the time limits described and in the prescribed manner.

Appeals against Grades in Coursework Units

Higher degree research candidates may appeal against grades in coursework units, where such units form part of

their program of study, to the Grading Appeals Committee. Refer to the procedures as described in the Student Information—Coursework section of this Handbook on page 136.

Appeals on Matters of Candidature, Scholarships and Thesis Examinations

The HDRAC is a standing committee of Academic Senate established to investigate cases referred to it to:

1. Determine appeals against decisions of Academic Senate in respect of thesis examinations. Such appeals can only be made by the higher degree research candidate the subject of that decision and must be restricted to claims of procedural irregularity in the conduct of the examination.
2. Determine appeals against decisions of the Higher Degree Research Committee which fall into the following academic and procedural areas:
 - i) admission to candidature;
 - ii) leave of absence;
 - iii) supervisory arrangements;
 - iv) termination of candidature;
 - v) ranking of scholarship applicants and the awarding of Australian Postgraduate Awards with stipend, Endeavour International Postgraduate Research Scholarship and Macquarie University higher degree research scholarships;
 - vi) implementation of scholarship conditions.

Such appeals can only be made by the higher degree research candidate the subject of that decision and must be restricted to claims of procedural irregularity. In the case of 2(v), where it can be demonstrated that there may have been procedural irregularities, appeals will be referred back to the Program and Examination Sub-Committee of the Higher Degree Research Committee.

3. Deal with any other matters referred to it by the Higher Degree Research Committee. HDRAC will only consider appeals made in writing and there shall be no provision for the personal appearance or representation of the parties involved in the appeal.

Candidates wishing to lodge an appeal against decisions of Academic Senate or the Higher Degree Research Committee should contact the Higher Degree Research Office, for further details of procedures and grounds for appeal.

Appeals Deadline

Appeals to the HDRAC on matters other than coursework grades must be received within one calendar month of the date of issue of the notice to the candidate of the matter at issue.

Graduation

Candidates who satisfy requirements for a Higher Degree on or before February will graduate in April 2009. All students graduating in April 2009 must have their qualification confirmed by Academic Senate at a meeting up to and including the February meeting. Students who qualify after February Senate will not be eligible to graduate until September 2009. If you are unsure of your graduation status, you must contact your Faculty or the Higher Degree Research Office before 13 February or 7 August 2009.

April graduation information will be posted in late January with a return date of late February 2009. September graduation information will be posted in late July with a return date of mid August 2009. Graduating students must ensure that their mailing and email details are kept current at all times. All name changes, requests to defer graduation and requests to graduate at one of our overseas ceremonies must be made in writing and received by the Graduation Unit by the relevant deadline. Incomplete or late requests will not be processed.

All graduation communication is conducted by mail and email. Therefore you must update your mail and email details via eStudent before the end of your final examination period. This is particularly important for international students returning to their home country at the end of semester.

Outstanding Debts

In accordance with University Council Fee Rule 12(c) students who are indebted to the University shall not be permitted to graduate until such debt is cleared. Students with outstanding financial liabilities will not be allocated to a graduation ceremony. All debts must be paid prior to the closing date for the relevant graduation series. Students who pay after the closing date will be allocated to the next available ceremony.

For more information regarding graduation please visit the Graduation Unit website at www.graduation.mq.edu.au.

Scholarships

Macquarie University has generous scholarship schemes for applicants with a proven capacity for research. Our higher degree research candidates are an integral part of our research community and Macquarie provides a wide range of prestigious scholarships that provide for annual living allowance, supplementary scholarships, tuition fee costs and travel allowance to support them.

In addition to scholarships listed below there are many other internally and externally funded scholarships which become available from time to time. Higher degree research (HDR) candidates are encouraged to contact the HDR Faculty Manager to enquire about scholarships specific to that discipline.

Information on scholarships available for HDR study at Macquarie, including application forms, is available at www.research.mq.edu.au/students/scholarships.

GOVERNMENT FUNDED SCHOLARSHIPS

These awards aim to attract exceptional postgraduate students to study in areas of research strength at Australian higher education institutions. These highly competitive scholarships attract many applicants, and the number available will vary from year to year.

Endeavour International Postgraduate Research Scholarship (E-IPRS)

Key requirements:

- Academic Australian First Class Honours or equivalent, and a strong academic record
- Citizenship: international citizens (except New Zealand citizens and Australian permanent residents)
- Applying for Degree: PhD or MPhil, and not holding a previous degree at the equivalent level

Maximum tenure of award: two years full-time for a Masters and three years full-time for a PhD. Candidates enrolled in a PhD program may apply for a six month extension on the basis of research related delays.

The E-IPRS scholarship includes tuition fees and basic medical insurance. Macquarie University will normally sponsor a living stipend equivalent to the Australian Postgraduate Award. Holders are subject to satisfactory progress requirements.

Closing date for E-IPRS applications: 31 August

Australian Postgraduate Award (APA)

Key requirements:

- Academic Australian First Class Honours or equivalent, and a strong academic record
- Citizenship: international citizens (except New Zealand citizens and Australian permanent residents)
- Applying for Degree: PhD or MPhil, and not holding a previous degree at the equivalent level

Maximum tenure of award: two years full-time for a Masters and three years full-time for a PhD. Candidates enrolled in a PhD program may apply for a 6-month extension on the basis of research related delays.

The APA scholarship includes a living stipend; tuition fees; and allowances for relocation and thesis costs. In 2008, the full-time stipend was: A\$20,007 per annum, currently tax exempt; and (with special approval) part-time: \$10,710 per annum taxable. The stipends increase annually. Holders are subject to satisfactory progress requirements.

Closing date for APA applications: 31 October

Australian Postgraduate Award Industry (APAI)

These awards are won by the University and an industry partner for a project in an area of common research interest. Students are encouraged to contact academic staff in their area of research interest to enquire about the possibility of awards.

Key requirements:

- Academic Australian Second Class Division I Honours or equivalent, and a strong academic record
- Applying for Degree: PhD or MPhil, and not holding a previous degree at the equivalent level
- Citizenship: Australian/New Zealand citizens, or Australian permanent resident

Maximum tenure of award: two years full-time for a Masters and three years full-time for a PhD. Candidates enrolled in a PhD program may, with industry partner support, apply for a 6-month extension on the basis of research related delays.

The APAI scholarship includes a living stipend; tuition fees; and allowances for relocation and thesis costs. In 2008, the full-time stipend for new projects was: A\$26,140 per annum, currently tax exempt; and (with special approval) part-time: A\$14,277 per annum taxable.

Closing date for APAI applications: varies by project, please see the HDR scholarships website at: www.research.mq.edu.au/students/scholarships.

MACQUARIE UNIVERSITY HDR SCHOLARSHIPS

Macquarie University Research Excellence Scholarship and International Macquarie University Research Excellence Scholarship (iMQRES)

The Macquarie University Research Excellence Scholarship (MQRES) scheme was introduced in 2006 to attract high quality domestic and international research candidates to undertake research at a doctoral level primarily in the University's identified Concentrations of Research Excellence (CORE), as well as the broader

University community. Information on the identified Macquarie University CORE can be viewed at www.research.mq.edu.au/excellence.

MQRES scholarships may be allocated to specific projects which are then advertised on the scholarships website seeking to recruit suitable PhD candidates. Alternatively, applicants may propose their own project for consideration. Prior to applying, applicants should contact academic staff in their area of research interest to discuss their project proposal and the possibilities for funding.

Key requirements:

- Academic Australian First Class Honours or equivalent, and a strong academic record
- Citizenship: not specified
- Applying for Degree: PhD, and not holding a previous degree at the equivalent level

Maximum tenure of award: three and a half years full-time.

The MQRES scholarship includes a living stipend at the Australian Postgraduate Award rate; tuition fees, and allowances for relocation and thesis costs. International students will also receive compulsory health cover for the scholarship tenure. Holders are subject to satisfactory progress requirements.

Closing dates for MQRES applications: Individual projects considered year round, and advertised projects by the closing date advertised on the scholarships website www.research.mq.edu.au/students/scholarships.

Faculty and Departmental Scholarships

Available Faculty scholarships are displayed regularly online at www.research.mq.edu.au/students/scholarships. Faculty HDR Administrators can also provide additional information on opportunities relevant to that discipline, including external funding opportunities which are forwarded to relevant areas to display locally. Eligibility is usually at least Australian Second Class Division I Honours or equivalent, and a strong academic record with applicants considered under the Macquarie University rating guidelines. Where the Higher Degree Research Committee has approved alternative guidelines these would be clearly stated and displayed.

OTHER FINANCIAL SUPPORT

Faculty-funded Support

Faculty funding to support enrolled research candidates varies according to the Faculty/Department. Candidates may apply for financial aid for travel costs for conferences, fieldwork and basic research needs. Faculties have an allowance for consumables and minor equipment including printing, chemicals, photocopying costs and specific software, and generally provide financial support for the candidate to undertake their research.

Postgraduate Research Fund

The Macquarie University Postgraduate Research Fund (PGRF) is the main source of central funding for enrolled research candidates in addition to substantial Faculty funding. The primary goals of the PGRF are:

- to add value to the research thesis,
- to provide the University's postgraduate research students with the means to enhance their postgraduate research experience,
- to gain first-hand experience of the grant writing process, and
- to receive feedback from assessors during the interview, which is part of the Fund's assessment process.

Application is coordinated biannually within the Faculty, and applicants are considered on a competitive basis taking into account individual merit and need. Applicants are required to attend an interview as part of the application process.

Key requirements:

- enrolled in full or part-time HDR degree in their initial candidature period at Macquarie University (including staff but excluding students enrolled beyond 3.5 full-time/equivalent years for PhD or 1.5 years for MPhil, or eligible for re-examination), and
- in the third or later second year of doctoral enrolment, or early second year of MPhil enrolment, with significant research results achieved by the time of application.

The maximum value of a PGRF grant is \$4000 over a one to two year period. A student may normally hold only one PGRF award during the life of their research candidature; however, a second application may be considered, e.g. cotutelle/co-supervised candidates, or individuals in exceptional situations.

Full details and forms are available at www.research.mq.edu.au/students/scholarships/pages/pgfrf, with additional information on the scheme available from your Faculty HDR staff.

Closing date for applications: April and September each year.

PROGRAMS OF STUDY— RESEARCH

Higher Degree Research Programs

Research degree programs provide a unique opportunity to follow a specific interest in an area of research, to focus on this for several years and make an important contribution to the development of new knowledge in society. Macquarie University provides its research students with the opportunity to work with academics at the international forefront of their fields. Research degrees at both Doctoral and Masters levels are offered in all Departments and professional doctorates are available in psychology, linguistics, professional communication and business administration. Combined degrees are available in psychology.

Research Degrees

- Master of Philosophy
- Doctor of Philosophy

Professional Doctorates

- Doctor of Business Administration
- Doctor of Applied Linguistics
- Doctor of Professional Communication
- Doctor of Psychology (Clinical)
- Doctor of Psychology (Clinical Neuropsychology)
- Doctor of Psychology (Organisational)

Combined Research and Coursework Degrees

- Doctor of Philosophy/Master of Clinical Neuropsychology
- Doctor of Philosophy/Master of Clinical Psychology
- Doctor of Philosophy/Master of Organisational Psychology

In some circumstances applicants may be required to complete a preliminary program of research training or preparation prior to enrolment in their higher degree research (HDR) program. This may occur in situations where an applicant does not have the required qualifications for the degree or where the Faculty requires prior training. Preliminary postgraduate coursework programs such as Postgraduate Certificates in Research Methods are available for such situations. Please refer to the Programs of Study—Coursework sections of this part of this Handbook for further information.

Candidates in some disciplines may be required to undertake specific coursework or training units to supplement their research work. Successful HDR applicants will be independently advised of this by the relevant Faculty.

Examination for research degrees is generally by written thesis which must conform to the established University guidelines. The University recognises that theses or parts of theses may be presented in a variety of formats and media, and would normally incorporate a written component. Theses may include, for example, relevant papers (including conference presentations) published or accepted for publication during the period of candidature, together with a comprehensive and critical introduction and integrative conclusion. A candidate may only include published work which is part of the contribution to knowledge of the thesis if the research and publication of the work occurred during the candidature of the degree.

Higher degree research programs may be taken either by full-time or part-time study and arrangements may be made under certain conditions for supervision of research to be conducted by external or distance mode.

The availability of supervision reflects the present research interests of members of academic staff in the various Departments and in the Macquarie research centres. Candidates for research degrees can be accepted only where suitable specialised supervision is available. Candidates are required to approach potential supervisors prior to making application to the University.

Information on the research interests of academic staff members and full details of Macquarie's research centres are available online at:

Macquarie Divisions and Departments:
www.mq.edu.au/divisions/index.html

Research Centres at Macquarie:
www.research.mq.edu.au/excellence/research_centres

Concentration of Research Excellence (COREs):
www.research.mq.edu.au/excellence

For information on the application process please refer to www.research.mq.edu.au/students/new_students.

More specific information on the requirements for completing a HDR program and the support structure Macquarie provides can be found in the *Higher Degree Research Guide for Candidates and Supervisors* at www.research.mq.edu.au/students/current_students/hdrguide.

MASTER OF PHILOSOPHY

The Master of Philosophy (MPhil) is an ungraded degree awarded for research that demonstrates that the candidate has made a contribution to knowledge in a particular field of study by presenting new facts or by demonstrating an independent critical ability to evaluate existing material in a new light.

The MPhil program is available in all Departments. The degree requires that a thesis with a maximum word length of 50,000 words be submitted for a written assessment by two examiners external to the University. Before submitting a thesis, all candidates, including external candidates, must have followed an approved program of study and research within the University for a period determined by the Higher Degree Research Committee and normally not less than one year. The program of study may include some coursework and research seminar units and participation in presentations, and will be supervised by at least two supervisors.

In some disciplines further research training or the completion of a preliminary coursework program in research preparation may be required prior to admission to candidature. For further information please refer the section on Pathways to Macquarie Research Programs on page 69 and to the Faculties and Departments section of this Part of this Handbook.

Admission requirements: To be eligible for consideration for admission to the MPhil an applicant must normally possess a Bachelor degree with Honours Class I or Class II, or other evidence of research ability, from a recognised university or another tertiary institution. Requirements for admission to research degrees are defined in the Postgraduate Rules—Research section in this part of this Handbook.

Length of candidature: 1–2 years full-time, 2–4 years part-time. The MPhil is a two year equivalent full-time program. The minimum period of candidature for full-time candidates is one year, the maximum period two years. For part-time candidates the minimum is two years, the maximum four years. A full-time candidate is expected to commit on average over a 12-month period a minimum of 40 hours per week to their research study program. A part-time candidate is expected to commit on average over a 12-month period a minimum of 20 hours per week to their research study program and consult weekly with their supervisors.

DOCTOR OF PHILOSOPHY

The Doctor of Philosophy (PhD) is an ungraded degree awarded for research that demonstrates that the candidate has the capacity to conduct research independently and form a distinct contribution to the knowledge of the subject and to afford evidence of coherence and originality shown either by the discovery of new facts or by the exercise of independent critical power. The candidate's program of study will be supervised by at least two supervisors.

The degree requires that a thesis with a maximum word length of 75,000 to 100,000 words (depending on the Department) be submitted for a written assessment by three examiners external to the University. Before submitting a PhD thesis, all candidates must have followed an approved program of study and research within the University for a period determined by the Higher Degree Research Committee and normally not less than two years.

A candidate's program of study must be supervised by an eligible Macquarie academic staff member, and will normally be carried out within the University. There is, however, provision for a candidate to be permitted to carry out much of the program outside the University.

In some disciplines further research training or the completion of a preliminary coursework program in research preparation may be required prior to admission. For further information please refer the section on Pathways to Macquarie Research Programs on page 69 and to the Faculties and Departments section of this Part of this Handbook.

Admission requirements: To be eligible for admission a candidate must normally possess either a Masters degree with a substantial research component, or a Bachelor degree with first-class or second-class Honours division 1 from a recognised University or another tertiary institution. Requirements for admission to research degrees are defined in the Postgraduate Rules—Research section in this part of this Handbook.

Length of candidature: 2–4 years full-time; 4–8 years part-time. The PhD is a four years equivalent full-time program. The minimum period of candidature is two years and the maximum period is four years for full-time candidates and eight years for part-time candidates. A full-time candidate is expected to commit on average over a 12-month period a minimum of 40 hours per week to their research study program. A part-time candidate is expected to commit on average over a 12-month period a minimum of 20 hours per week to their research study program and attend the University on average at least once a week for consultation with their supervisors.

PROFESSIONAL DOCTORAL DEGREE PROGRAMS

Professional Doctorate degrees are rigorous programmes of advanced study and research, designed specifically to meet the needs of industry and professional practice. They provide opportunities for professionals of standing in a relevant profession to develop sophisticated intellectual and applied knowledge and skills to make a difference in their workplace and/or professional context.

The professional doctorates include a coursework component as part of the requirements for completion of the research degree and offer the opportunity for candidates to undertake doctoral level study in the context of their workplace. The degrees focus on research and investigation into a relevant area of theory, policy practice and the thesis must make a distinct contribution to the improvement of professional practice or policy in the field of study. This generally includes at least one year equivalent of coursework training directly related to the study discipline and acquisition of discipline-relevant research training skills. The programs are usually three years equivalent full-time and the thesis word length depends on discipline requirements. The structure and requirements for these degrees are outlined below.

To qualify for the degree the candidate is required to pass each component of the program individually and to complete any coursework or project requirement before submitting the thesis for examination.

Doctor of Business Administration

The Doctor of Business Administration (DBA) is a full-fee paying professional doctorate degree aimed at management professionals. The program is designed as three-years full-time, or one year full-time for the coursework component and four years part-time for the research thesis.

The overall aim of the program is to equip managers and consultants with the skills and knowledge to apply current research methods in their investigation and resolution of organisationally based problems. The DBA program requires a high level of face-to-face interaction between student and supervisor. Candidates resident in Hong Kong may undertake the DBA on the local campus of Macquarie University.

Admission requirements: A Bachelor degree with first class Honours or second-class Honours division 1 or a Masters degree with a substantial research component; a demonstrated capacity to undertake research; a minimum of five years experience in a management situation which provides an opportunity to undertake research in professional practice or policy; three referees reports.

Length of candidature: 3 years full-time, up to 6 years part-time.

Commencement: First half-year.

Course requirements: 4 coursework units (total 32 credit pts) and a research thesis.

Program structure

The DBA is an intensive program, one-third coursework and two-thirds research. The four coursework units are completed at the beginning of the program, usually in the first year of enrolment. To enable progression to the thesis component students must maintain at least a credit grade average throughout the coursework component of the degree.

Compulsory coursework units

MGSM990	Quantitative Research Methods in Management
MGSM991	Qualitative Research Methods in Management
MGSM992	Literature Survey and Criticism
MGSM994	Management Research and Investigation

Doctor of Applied Linguistics

The Doctor of Applied Linguistics is a professional doctorate intended for Australian and overseas practitioners working in applied linguistics and language education and related fields. The program provides advanced level academic study of a range of language-related issues through initial coursework, followed by a substantial

research component which is supervised and coordinated through a tightly structured program of web-based interaction. Candidates need to obtain a credit grade average in the coursework units in order to proceed to the research component of the degree.

Admission requirements: Master of Applied Linguistics degree or equivalent with a dissertation component or a Bachelor's degree with Honours class I or Honours class II together with at least five years relevant professional experience.

Length of candidature: 3 years full-time, 4–6 years part-time. Part-time candidates should enrol in required coursework units to the value of 8 credit points per semester over the first two part-time years.

Attendance mode: Distance only.

Commencement: July.

Course requirements: Coursework component (10 coursework units/32 credit points). Research component incorporating web-mediated seminars, thesis preparation and an 80,000 word (maximum) thesis (64 credit points). Total 96 credit points.

Program structure

Compulsory coursework units

LING983	2 cps	Issues in Applied Linguistic Research
LING984	4 cps	Qualitative Research Methods in Applied Linguistics
LING985	4 cps	Text and Discourse Analysis
LING986	4 cps	Quantitative Research Methods in Applied Linguistics

Elective coursework units

Select *three* of the following units

LING900	4 cps	Grammar, Meaning and Discourse
LING904	4 cps	Pragmatics
LING906	4 cps	Language Testing and Evaluation
LING912	4 cps	Second Language Acquisition
LING918	4 cps	Concepts in Managing Language Programs
LING938	4 cps	Curriculum Innovation in Language Teaching
LING947	4 cps	Discourse in Professional and Organisational Contexts
LING968	4 cps	Computer-Mediated Communication in Second Language Acquisition

Select *three* of the following units

LING943	2 cps	Current Issues in Second Language Acquisition
LING944	2 cps	Current Issues in Language Testing and Evaluation
LING945	2 cps	Current Issues in Curriculum Innovation

LING991	2 cps	Current Issues in Discourse and Meaning
LING994	2 cps	Current Issues in Language Program Management
LING996	2 cps	Current Issues in Language Teaching and Technology
LING998	2 cps	Current Issues in Professional Communication

Doctor of Professional Communication

The Doctor of Professional Communication is intended for Australian and overseas practitioners and communication specialists working in a range of professions and organisations. It allows candidates to undertake doctoral level study in the context of their own workplaces. Among other specialisations, the doctorate will be directly relevant to communications managers and trainers, HR managers, marketing directors, lawyers, healthcare practitioners, counsellors and social workers, and management level personnel in a wide variety of professional and organisational fields.

The program provides advanced level academic study of a range of relevant topics by means of initial coursework, followed by a substantial research component. This is supervised and coordinated through a program of web-mediated seminar interaction and conferencing, followed by a substantial individually supervised research component. Candidates normally need to obtain a credit average in their coursework units in order to proceed to the research component of the degree.

Admission requirements: A Bachelors degree with Honours of at least class II division I or an equivalent award or an appropriate Masters degree with research training plus ability to demonstrate research potential, and at least five years professional experience in a communication-related context.

Length of candidature: 3 years full-time, 4–6 years part-time.

Attendance mode: Distance only.

Commencement: March and July.

Course requirements: Coursework component (7 coursework units/32 credit points), Research component (64 credit points). Thesis length is normally between 60,000 and 80,000 words. Total 96 credit points.

Program structure

Compulsory coursework units

DPC947	4 cps	Discourse in Professional and Organisational Contexts
DPC948	4 cps	Evaluating Communication Systems, Processes and Products
DPC956	4 cps	Acquiring Professional Communicative Expertise

And either

DPC971	8 cps	Research Training in Professional Communication (A)
--------	-------	---

or

DPC972	10 cps	Research Training in Professional Communication (B) (Note: 10 cps for candidates with advanced standing from MACPO)
--------	--------	--

Elective coursework units

Select *three* from the following units

DPC900	4 cps	Grammar, Meaning and Discourse
DPC967	4 cps	Researching Professional and Organisational Communication
DPC957	4 cps	Inter- and Intra-cultural Communication
DPC958	4 cps	Professional-Client Communication
DPC959	4 cps	Mediated Communication
DPC960	4 cps	Organisational Communication

Doctor of Psychology (all strands)

A program of coursework and research which satisfies the requirements for professional admission to the Australian Psychological Society together with a professional research qualification with candidature of 3 years full-time or equivalent part-time. There are three streams available in the Doctor of Psychology—Clinical, Clinical Neuropsychology, and Organisational. Course requirements for the three strands are listed below.

Prior to entry to the Doctor of Psychology program, applicants must have satisfactorily completed specified prerequisite units with a minimum number of credit points in the equivalent of the first half year full time of a relevant Masters in Psychology degree. Candidates who have completed equivalent qualifications in a Masters in Psychology at another institution may also be admitted.

Admission will be competitive. In selecting candidates, particular consideration will be given to performance in the Masters coursework units; the quality of the candidate's research proposal; the doctoral referee's report from the academic who agrees to supervise the candidate's doctoral research and information supplied on a supplementary personal information sheet. A personal interview will also form part of the selection process.

Additional information on selection details and forms required for consideration of applicants for the three strands of the Doctor of Psychology are available from the Department. The Psychology Supplementary Information Sheet is available at www.psy.mq.edu.au and the Doctoral Referees Report at www.research.mq.edu.au/students/forms.

Doctor of Psychology (Clinical Psychology)

Admission requirements: Completion of specified prerequisite units in the Master of Clinical Psychology program with a minimum of 22 credit points of coursework units which must include PSY863 (or PSY967) and PSY933. Master of Clinical Psychology graduates and applicants with equivalent qualifications from other institutions may also be considered.

Length of candidature: 3 years full-time, 6 years part-time.

Attendance mode: Full-time or part-time. Some units are offered for all candidates in the day time; others in the late afternoon or early evening. Since units are not repeated separately for part-time students, all intending part-time applicants should be able to obtain leave from their employer for at least one day each week. In addition, part-time applicants must demonstrate availability to complete the required 1500 hours of supervised placements.

Commencement: Second half-year.

Program structure

Ten core compulsory units plus enrolments in the time-based research unit PSY994, which is continuous from program commencement.

Non-core coursework units from the Master of Clinical Psychology program which must generally be completed prior to commencement of core units with the exception of PSY994 in which enrolment is continuous.

Advanced standing exemptions for prior coursework will be given where applicants have completed units in another institution or in an earlier degree. Core units must be completed as part of the DPsych degree and no exemptions will be given for the units marked *.

Prerequisite units (1st semester in a Masters program)

PSY863	4 cps	Research Design & Evaluation
or		
PSY967	4 cps	Evidence Based Clinical Psychology
plus		
PSY904	4 cps	Counselling and Cultural Perspectives
PSY961	4 cps	Advanced Psychopathology
PSY962	2 cps	Psychological Assessment
PSY965	2 cps	Cognitive Behavioural Therapy (1)
PSY930	1 cp	Professional Practice
PSY933	8 cps	Research Proposal
*PSY994	0 cps	Research Thesis

Year 1 coursework units

PSY926	4 cps	Psychology of Health
PSY927	2 cps	Cognitive Behavioural Therapy (II)

PSY928	2 cps	Psychological Assessment (II)
PSY929	1 cp	Clinical Psychopharmacology
PSY966	2 cps	Neuropsychological Disorders
Plus 3 electives		

Required units

*PSY956	0 cps	Supervised Internship (I)
*PSY957	0 cps	Supervised Internship (II)
*PSY994	0 cps	Research Thesis

Year 2 coursework units

PSY919	4 cps	Developmental Psychopathology
--------	-------	-------------------------------

Required units

*PSY897	14 cps	APA (I) (Research Project)
*PSY958	0 cp	Supervised Internship (III)
*PSY959	0 cp	Supervised Internship (IV)
*PSY994	0 cp	Research Thesis
Plus 1 elective		

Year 3

Required units

*PSY898	16 cps	APA (II) (Research Project)
*PSY960	2 cps	Supervised Internship (V)
*PSY994	0 cp	Research Thesis

Doctor of Psychology (Clinical Neuropsychology)

Admission requirements: Completion of specified prerequisite units in the Master of Clinical Neuropsychology program with a minimum of 22 credit points of coursework units which must include PSY863 and PSYN825. Master of Clinical Neuropsychology graduates and applicants with equivalent qualifications from other institutions may also be considered.

Length of candidature: 3 years full-time, 6 years part-time.

Attendance mode: Full-time or part-time. Some units are offered for all candidates in the daytime; others in the late afternoon or early evening. Since units are not repeated separately for part-time students, all intending part-time applicants should be able to obtain leave from their employer for at least one day each week. In addition, part-time applicants must demonstrate availability to complete 1500 hours of supervised placements.

Commencement: Second half-year.

Program structure

The core compulsory units plus enrolment in the unit PSY994 Research Thesis which is continuous from program commencement.

Non core coursework units from the Master of Clinical Neuropsychology program which must generally be completed prior to commencement of core units with the exception of PSY994 in which enrolment is continuous.

Advanced standing exemptions for prior coursework will be given where applicants have completed units in another institution.

er institution or in an earlier degree. Core units must be completed as part of the DPsych degree and no exemptions will be given for the units marked *.

Prerequisite units (1st semester in a Masters program)

PSY863	4 cps	Research Design & Evaluation
PSYN803	2 cps	Neuropsychological Disorders
PSYN804	2 cps	Neuropsychopharmacology
PSYN805	2 cps	Case Conference (I)
PSYN821	2 cps	Psychological Assessment (I)
PSYN824	2 cps	Neuroanatomy
PSYN825	8 cps	Research Proposal

Year 1 coursework units

PSYN807	2 cps	Behavioural Management
PSYN809	2 cps	Research Seminar (I)
PSYN810	4 cps	Advanced Psychopathology
PSYN811	4 cps	Cognitive Neuropsychology
PSYN829	2 cps	Case Conference (II)
PSYN822	2 cps	Psychological Assessment (II)
PSYN823	4 cps	Neuropsychopathology

Required units

*PSYN815	1 cp	Supervised Internship (I)
*PSYN816	1 cp	Supervised Internship (II)
*PSYN817	1 cp	Supervised Internship (III)
*PSY994	0 cps	Research Thesis—Continuing

Year 2 coursework units

PSYN808	8 cps	Developmental Neuropsychology
PSYN830	1 cp	Case Conference (III)
PSYN813	2 cps	Recovery and Rehabilitation
PSYN814	2 cps	Research Seminar (II)

Required units

*PSYN833	14 cps	APA (I) (Research Project)
*PSYN818	1 cp	Supervised Internship (IV)
*PSY994	0 cps	Research Thesis—Continuing

Year 3

PSYN831	1 cp	Case Conference (IV)
*PSYN834	16 cps	APA (II) (Research Project)
*PSYN819	0 cps	Supervised Internship (V)
*PSY994	0 cps	Research Thesis—Continuing

Doctor of Psychology (Organisational Psychology)

Admission requirements: Completion of specified prerequisite units in the Master of Organisational Psychology program with a minimum of 22 credit points of coursework units which must include PSY863 and PSYO944. Master of Organisational Psychology graduates and applicants with equivalent qualifications from other institutions may also be considered.

Length of candidature: 3 years full-time, 6 years part-time.

Attendance mode: Full-time or part-time. Some units are offered for all candidates in the day time; others in the late afternoon or early evening. Since units are not repeated separately for part-time students, all intending part-time applicants should be able to obtain leave from their employer for at least one day each week. In addition, part-time applicants must demonstrate availability to complete 1500 hours of supervised placements.

Commencement: Second half-year.

Program structure

Nine core compulsory units plus enrolment in the unit PSY994 Research Thesis which is continuous from program commencement.

Non core coursework units from the Master of Organisational Psychology program which must generally be completed prior to commencement of core units with the exception of PSY994 in which enrolment is continuous.

Advanced standing exemptions for prior coursework will be given where applicants have completed units in another institution or in an earlier degree. Core units must be completed as part of the DPsych degree and no exemptions will be given for the units marked *.

Prerequisite units (1st semester in a Masters program)

PSY863	4 cps	Research Design & Evaluation
PSYO921	4 cps	Applied Psychology HRM
PSYO930	1 cp	Supervised Placement (1)
PSYO934	2 cps	Professional Practice (1)
PSYO940	4 cps	Psychological Assessment
PSYO944	8 cps	Research Proposal

Year 1 coursework units

PSYO935	2 cps	Professional Practice (II)
PSYO936	2 cps	Professional Practice (III)
PSYO914	4 cps	Industrial Psychology
PSYO915	4 cps	Organisational Change and Development
PSYO919	4 cps	Training in Organisations
Plus 3 electives		

Required units

*PSYO931	1 cp	Supervised Internship (II)
*PSYO932	1 cp	Supervised Internship (III)
*PSY994	0 cps	Research Thesis

Year 2 coursework units

PSYO939	4 cps	Interpersonal Skills in Organisations
<i>or</i>		
PSYO946	4 cps	Performance Assessment of Organisations and Individuals
PSYO937	2 cps	Professional Practice (IV)

Required units

*PSYO947	14 cps	APA (I) (Research Project)
*PSYO933	1 cp	Supervised Internship (IV)
*PSY994	0 cp	Research Thesis

Year 3 core units

*PSYO948	16 cps	APA (II) (Research Project)
*PSYO938	2 cps	Supervised Internship (V)
*PSY994	0 cp	Research Thesis

COMBINED RESEARCH AND COURSEWORK DEGREES

The combined degree provides training in both doctoral level research and professional psychological practice. It is anticipated that part-time teaching will be available to students enrolled in this program. Note that these degrees are developed as combined research/coursework programs, and it is NOT possible for a candidate enrolled in a Combined PhD/Coursework Masters in Psychology to take out the Masters degree separately.

The Department of Psychology in the Faculty of Human Sciences offers three combined degree programs:

Doctor of Philosophy/Master of Clinical Neuropsychology
 Doctor of Philosophy/Master of Clinical Psychology
 Doctor of Philosophy/Master of Organisational Psychology

Admission requirements: An Honours degree in psychology at first-class level; normally expected to have a scholarship or equivalent; acceptance for entry to coursework masters; availability of a suitable and willing PhD supervisor.

*Applicants for the combined degree must complete a *Psychology Personal Supplementary Information form* in addition to the *Higher Degree Research Application form*. The form is available at www.research.mq.edu.au/students/new_students/application_forms.

Quota: It will be possible to admit only a limited number of students. In selecting candidates, particular consideration will be given to information supplied on the supplementary information sheet*.

Length of candidature: 4 years full-time or 3 years full-time plus 2 years part-time under specified conditions.

Attendance: Students enrolled in the combined degree will substitute the Research Training in Psychology units in place of the Masters research thesis; and will be required to spread the coursework units as well as the PhD research over four years. Students will be required to attend and present their research at the Faculty Research Festival each year they are enrolled. Requirements, unit descriptions and other details of the coursework component of the combined degrees are contained in the Coursework section of this Handbook.

COTUTELLE AND JOINT DOCTORAL SUPERVISION

Macquarie is committed to an expansion of its international Cotutelle/Joint Enrolment program and has arrangements in place with a number of European, American and Asian universities. Macquarie research candidates can enrol concurrently at an overseas institution and are able to conduct research both at home and abroad. Candidates produce a single thesis which is examined in accordance with the requirements of each institution. Eligible candidates are financially supported for this joint enrolment through a Macquarie University Research Excellence Award (MQRES). Enquiries about a Cotutelle/Joint enrolment can be made through your Principal Supervisor and directly to:

Professor Ernest Jordan
 Director International HDR Marketing and Development
ernest.jordan@mq.edu.au

PATHWAYS TO MACQUARIE HIGHER DEGREE RESEARCH PROGRAMS

In some circumstances, applicants may be required to complete a preliminary program of research training or preparation prior to enrolment in their higher degree research (HDR) program. This may occur in situations where an applicant does not have the required qualifications for the degree or where the Faculty requires prior training. Preliminary postgraduate coursework programs such as Postgraduate Certificates in Research Methods are available for such situations.

Candidates in some disciplines may be required to undertake specific coursework or training units to supplement their research work. Successful HDR applicants will be independently advised of this by the relevant Faculty.

A range of new Postgraduate Certificates in Research methods or preparation are available for applicants who may not meet the admission criteria and/or do not have adequate research experience or background in their chosen discipline to commence a research degree immediately. When close to completion of the preliminary program, a fresh application for admission to the higher research degree must be submitted to the HDRO.

Applications for preliminary programs are made through the Coursework Studies Section for domestic students and through Macquarie International for international students:

Domestic applicants:
www.postgradandbeyond.mq.edu.au

International applicants:
www.postgradandbeyond.mq.edu.au/coursework/international.htm

For further information on pathways to higher degree research study refer to www.research.mq.edu.au/students/new_students/areas/degrees/pathway.

FACULTIES AND DEPARTMENTS—RESEARCH

Faculty of Arts

The Faculty of Arts comprises a broad range of historical, language, literary, legal, music, sociology, philosophy and political studies with a common interest in the analysis of human affairs and culture both in the past and the present. The Faculty is home to the following Departments and Centre:

Centre for Research on Social Inclusion
Department of Ancient History
Department of Anthropology
Department of English
Department of Indigenous Studies – Warawara
Department of International Studies
Department of Media, Music and Cultural Studies
Department of Modern History, Politics, International Relations and Security
Department of Philosophy
Department of Sociology
Macquarie Law School

Higher degree research candidates in the Faculty of Arts are supported by experienced supervisors, the Postgraduate Support Group and the Faculty commencement program which supplements the University Central commencement program. Candidates undertaking a research degree choose a topic of research in consultation with relevant academic staff and are assigned to a particular supervisor. Applicants are required to consult the particular Departmental website for details of staff research interests and contact a potential supervisor in the Department prior to making a formal application.

Each Department offers its own discipline-specific research training unit with varying content. These units cover the basic protocols of academic research in the discipline, such as the formulation and testing of a hypothesis, literature review, thesis planning and time management. Seminar units combine instruction in research methods and thesis writing with a forum for the presentation of research in progress in some Departments and also consider typical challenges facing research students (such as writing block, unrealistic expectations, and inaccessible data) and ways of avoiding or resolving them.

Candidates enrolling in a research degree in the Faculty of Arts participate in work-in-progress seminars. Through half-yearly interviews and work-in-progress presentations, commencing research candidates will receive feedback on their work from a panel of academics in their field. Some coursework may be required of candidates, depending upon individual circumstances. Candidates may also pursue MPhil and PhD degrees through creative-orientated projects.

The individual supervision sessions guide students in clarifying their own specific research area, in formulating the key problems to be tackled, a realistic schedule for the prosecution of the research, and a literature review. Acceptance into a research degree is dependent on the availability of supervision.

Brief descriptions of the research training units can be found in the Higher Degree Research Units of Study section in Part 3 of this Handbook.

General higher degree research administrative enquiries

Email: hdrarts@mq.edu.au
Web: www.mq.edu.au/arts

DEPARTMENT OF ANCIENT HISTORY

The Department houses the Ancient Cultures Concentration of Research Excellence. The discipline covers a wide range of research fields in the ancient Near East, Archaeology, Christian and Jewish studies, Coptic, Egyptology, Epigraphy, Greek and Roman history, late Roman/Byzantine/Silk Road studies, Numismatics and Papyrology. Candidates are expected to have appropriate ancient and modern language qualifications and/or to include in their programs suitable units from the postgraduate coursework programs. A thesis in Egyptology requires prior completion of a program equivalent to a Master of Arts in Egyptology by coursework with Minor Research Project (for students who have done Egyptology study at undergraduate level) or the Master of Arts in Egyptology by coursework plus the postgraduate certificate in research preparation in humanities. Besides attending postgraduate seminars during the first semester, candidates in their first year are expected to offer a paper at the Ancient History Postgraduate Research Mini-Conference held during the second semester. Candidates in their final year will also be expected to give a paper at this conference.

Supervision for research programs and information on staff interests is available on the website.

Academic enquiries

Web: www.anchist.mq.edu.au

Egyptology

Contact: Associate Professor Boyo Ockinga
Tel: +61 2 9850 8852
Fax: +61 2 9850 8240
Email: boyo.ockinga@mq.edu.au

Graeco-Roman

Contact: Dr Stephen Llewelyn
Tel: +61 2 9850 8843
Fax: +61 2 9850 8240
Email: stephen.llewelyn@mq.edu.au

DEPARTMENT OF ANTHROPOLOGY

Ethnographic and cultural research is conducted in Aboriginal Australia, Asia, Europe and Latin America. Of special interest are development studies and applied anthropology, migration and displacement, identity and subjectivity, art and affect, culture and media, health, religion, gender and sexuality studies.

PhD candidates usually spend between 12 and 18 months conducting original field research. MPhil candidates may conduct library or field-based research, with up to six months' fieldwork. Non-traditional projects, eg with a video or creative component, are possible.

Academic enquiries

Contact: Dr Greg Downey
Tel: +61 2 9850 8079
Fax: +61 2 9850 8610
Email: greg.downey@mq.edu.au
Web: www.anth.mq.edu.au

DEPARTMENT OF ENGLISH

The Department of English offers a broad range of research directions in literary history, contemporary literary studies, children's literature, drama, and creative writing. Current research interests of staff include English, Australian, and post-colonial literatures; medieval literature; Shakespeare and the Renaissance; Victorian literary cultures; modernist, contemporary, and post-modernist literatures; feminist studies; literary theory; print and visual media in youth cultures; and creative writing. Students may choose to undertake either a research-only thesis or a linked thesis with a creative component (available to suitably qualified candidates in some areas of study).

Academic enquiries

Contact: Dr Antonina Harbus
Tel: +61 2 9850 6802
Fax: +61 2 9850 8240
Email: antonina.harbus@mq.edu.au
Web: www.engl.mq.edu.au

DEPARTMENT OF INDIGENOUS STUDIES—WARAWARA

The Department of Indigenous Studies—Warawara is an academic department located within the Faculty of Arts. Apart from teaching Indigenous studies across the university, Warawara facilitates an alternative entry program aimed at providing access for Indigenous people to undergraduate courses across the University.

Academic enquiries

Contact: Dr Kristina Everett
Tel: +61 2 9850 9916
Fax: +61 2 9850 7735
Email: kristina.everett@mq.edu.au
Web: www.warawara.mq.edu.au

DEPARTMENT OF INTERNATIONAL STUDIES

Research in the Department of International Studies is focused on the nexus between language and culture, e.g. historical and linguistic description of languages, and literary productions in specific languages and of individual writers. Another current area of interest is in the theory and history of Asian, European and Latin American literature more generally and its evolution in the context of intercultural interactions. An emerging research area is the impact of globalisation and migration processes on cultural productions – such as literature, film and theatre – in the Asian, European and Australian context.

Fields of research for Chinese staff include: modern Chinese literature, Confucianism and intellectual history, the history of Shanghai, and the Qing dynasty court and theatre. Japanese Studies staff are actively involved in research on pure and applied linguistics in Japanese, manga – visual narrative and social commentary, Japanese literature, ICT-facilitated language teaching and socio-legal studies of Japan.

In addition, research projects situated in the area of applied linguistics, such as corpus-based approaches to language teaching and computer-mediated communication in second language acquisition, as well as language teaching methodology more generally contribute to the Department's research profile.

Academic enquiries: Asian Languages

Web: www.asianlang.mq.edu.au

Chinese

Contact: Professor Daniel Kane
Tel: +61 2 9850 7692
Fax: +61 2 9850 7046
Email: daniel.kane@mq.edu.au

Japanese

Contact: Dr Mio Bryce
Tel: +61 2 9850 7064
Fax: +61 2 9850 7046
Email: mio.bryce@mq.edu.au

Academic enquiries: European Languages

Web: www.eurolang.mq.edu.au

Croatian

Contact: Mr Luka Budak
Tel: +61 2 9850 7040
Fax: +61 2 9850 7054
Email: luka.budak@mq.edu.au

French

Contact: Dr Bert Peeters
Tel: +61 2 9850 7007
Fax: +61 2 9850 7046
Email: bert.peeters@mq.edu.au

German

Contact: Professor Martina Möllering
Tel: +61 2 9850 7012
Fax: +61 2 9850 7054
Email: martina.mollering@mq.edu.au

Italian

Contact: Dr Kerstin Pilz
Tel: +61 2 9850 7025
Fax: +61 2 9850 7054
Email: kerstin.pilz@mq.edu.au

Modern Greek

Contact: Dr Elizabeth Kefallinos
Tel: +61 2 9850 7031
Fax: +61 2 9850 7054
Email: elizabeth.kefallinos@mq.edu.au

Russian

Contact: Dr Marika Kalyuga
Tel: +61 2 9850 7016
Fax: +61 2 9850 7054
Email: marika.kalyuga@mq.edu.au

Spanish

Contact: Dr Estela Valverde
Tel: +61 2 9850 6882
Fax: +61 2 9850 7054
Email: estela.valverde@mq.edu.au

DEPARTMENT OF MEDIA, MUSIC AND CULTURAL STUDIES

The Department of Media, Music and Cultural Studies offers research specialisations across an extremely broad range of topics. In keeping with the Department's integrated approach to theory and practice, students can either complete their research purely through written thesis, or else incorporate up to 50 per cent creative work. Current areas of staff expertise exist in film sound studies, contemporary world cinema, cultural and literary theory, poststructuralism, international communication, international public relations, music technology, screen writing, fiction and non-fiction writing, gender studies, queer studies, popular culture, Australian theatre and performance studies, contemporary dance studies, vocal pedagogy, music business, migration and diaspora studies, computer-mediated communication, body modification, film making and film theory, Australian cinema, media politics, Island studies, South Asian music, and media production in audio-visual and sonic works.

Higher degree research students in the Department are required to take part in research seminars and annual reviews. Funding opportunities are available to all students for conference presentations, production and field-work.

Academic enquiries

Critical and Cultural Studies

Contact: Dr Anthony Lambert
Tel: +61 2 9850 6700
Fax: +61 2 9850 6893
Email: anthony.lambert@mq.edu.au
Web: www.ccs.mq.edu.au

International Relations

Contact: Professor Naren Chitty
Tel: +61 2 9850 8725
Fax: +61 2 9850 9689
Email: naren.chitty@mq.edu.au
Web: www.mucic.mq.edu.au

Media

Contact: Dr Maree Delofski
Tel: +61 2 9850 8761
Fax: +61 2 9850 6776
Email: maree.delofski@mq.edu.au
Web: www.media.mq.edu.au

Music and Dance

Contact: Dr Denis Crowdy
Tel: +61 2 9850 6787
Fax: +61 2 9850 6593
Email: denis.crowdy@mq.edu.au
Web: www.dcms.mq.edu.au

DEPARTMENT OF MODERN HISTORY, POLITICS, INTERNATIONAL RELATIONS AND SECURITY

The Department of Modern History, Politics, International Relations and Security houses a Concentration of Research Excellence in Social, Cultural and Political Change. Research in Modern History proceeds primarily by thesis and the department supports study in areas including Australian History, Australian society and culture, cultural history, historiography, European History, postcolonial/transnational, and gender history and the history of sexuality, World History, and the history of Empire.

Research in politics and international relations typically combines theoretical perspectives with an empirical focus that may have historical or contemporary dimensions. Staff members offer supervision within the areas of their expertise, including political theory, world politics in both comparative and normative aspects, foreign policy, political economy, public opinion and the mass

media, the politics of the Middle East and contemporary Muslim politics, and the politics of the Third World including Africa.

The Centre for Policing, Intelligence and Counter Terrorism undertakes research, delivers postgraduate courses at a Certificate, Diploma, Masters and Double Masters level and undertakes supervision of higher degree research candidates across the realm of security related issues. The centre has two key programs of study; policing, intelligence and counter terrorism and international security studies. Staff have a diverse array of research and teaching interests including areas such as domestic and international policing, human rights and peacekeeping, South East Asia geo-political trends, cybercrime and cyberterrorism, transnational and organised crime, terrorism and insurgency, counter terrorism, and intelligence analysis.

Academic enquiries

Modern History

Contact: Professor Angela Woollacott
Tel: +61 2 9850 8877
Fax: +61 2 9850 6064
Email: angela.woollacott@mq.edu.au
Web: www.modhist.mq.edu.au

Politics

Contact: Dr Geoffrey Hawker
Tel: +61 2 9850 8885
Fax: +61 2 9850 6594
Email: geoffrey.hawker@mq.edu.au
Web: www.pol.mq.edu.au

Centre for Policing, Security and Counter Terrorism

Contact: Associate Professor Cindy Davids
Tel: +61 2 9850 1439
Fax: +61 2 9850 1440
Email: cindy.davids@mq.edu.au
Web: www.pict.mq.edu.au

DEPARTMENT OF PHILOSOPHY

The Department of Philosophy offers expert supervision in areas including philosophical logic, philosophy of science, metaphysics, philosophy of mind, 19th and 20th century European philosophy, aesthetics, feminist philosophy, ethics and applied ethics, political philosophy, and social philosophy.

Throughout their candidature, PhD and MPhil candidates are required to participate in PHIL896 Philosophy Postgraduate Research Seminar. At the end of the first six months of candidature, progress is formally reviewed. In addition all students participate in formal annual reviews which provide an opportunity for them to discuss supervision with other members of staff to ensure work is progressing satisfactorily.

Academic enquiries

Contact: Professor Peter Menzies
Tel: +61 2 9850 8876
Fax: +61 2 9850 8892
Email: peter.menzies@mq.edu.au
Web: www.phil.mq.edu.au

DEPARTMENT OF SOCIOLOGY

The Department's areas of research specialisation cover a wide field and include governance, social policy and the policy process, social and political theory, the life course (youth, adulthood and age), gender and sexuality, culture, media and the arts, economy and society, and sociology of work. Sociology also has a strong interest in interdisciplinary education and candidates wishing to do a research degree linking sociology to some other area (such as women's studies, Aboriginal studies, politics or law) are encouraged to explore the possibilities.

Sociology entrants are normally expected to hold a good Honours degree in sociology, or in another social science (eg anthropology, history, mass communication, philosophy, politics, psychology) with a strong sociological component. Prospective candidates are strongly advised to approach both the Convenor of Postgraduate Studies in sociology and potential supervisors before making their application to the University.

Academic enquiries

Contact: Professor John Lechte
Tel: +61 2 9850 8620
Fax: +61 2 9850 9355
Email: john.lechte@mq.edu.au
Web: www.soc.mq.edu.au

CENTRE FOR RESEARCH ON SOCIAL INCLUSION

The Centre for Research on Social Inclusion undertakes cultural, social and philosophical research into ideas and processes of social inclusion and exclusion. The Centre is committed to interdisciplinary research that is both socially relevant and theoretically innovative.

There are currently five research clusters within the Centre: migration, multiculturalism and nation; critical theory and social hope; inclusion and exclusion in urban and regional spaces; the postcolonial world and globalisation; and welfare, care and social policy. Postgraduate students are active participants in the clusters and are able to benefit from regular seminars, workshops, conferences, and other research events.

Academic enquiries

Contact: Associate Professor Marion Maddox
Tel: +61 2 9850 4431
Fax: +61 2 9850 7732
Email: marion.maddox@mq.edu.au
Web: www.crsi.mq.edu.au

MACQUARIE LAW SCHOOL

Established in 1972 as Sydney's third law school, the Department of Law marked itself out by approaching the study of Law in an interdisciplinary way. Macquarie Law School currently offers Master of Philosophy and Doctor of Philosophy programs in environmental law.

Applicants should have completed the equivalent of an Australian undergraduate degree with Honours Class I, including a major research component, or a Masters degree with a substantial Masters thesis component (at least 25 per cent) in law or other related disciplines. International applicants are required to meet English language entry requirements of an IELTS of 7 or above.

Macquarie Law School provides a computer research room with internet and email for full-time research students. In addition, assistance with funding for presentation and attendance at conferences and for research expenses is available through the Faculty to all our research students.

Academic enquiries

Contact: Dr Shawkat Alam
Tel: +61 2 9850 8890
Fax: +61 2 9850 7686
Email: shawkat.alam@mq.edu.au
Web: www.law.mq.edu.au

Faculty of Business and Economics

The Faculty of Business and Economics offers an innovative, flexible and specialised mix of disciplines within the five departments of Accounting and Finance, Actuarial Studies, Business, Business Law and Economics. These distinct but complementary academic departments are augmented by the Applied Finance Centre and Macquarie Graduate School of Management.

The Faculty attaches great importance to providing a stimulating and supportive environment for higher degree research candidates to undertake valuable research and complete their degree on time. Support includes quality supervision, access to a team of academic writing specialists, faculty-wide and department specific research training units, workshops and seminars. Higher degree research candidates are provided with shared office accommodation, computers and funding for essential research costs and approved conference travel.

In addition to Macquarie University and Commonwealth Government scholarships, a number of Faculty scholarships are offered per year, open to both domestic and international candidates. Full scholarships cover international tuition fees and pay a stipend of \$32,500 tax free. Students who obtain a non-Faculty scholarship may be entitled to a top-up on their stipend, bringing it up to the same level as the full Faculty scholarship.

Higher degree research candidates take part in a Faculty commencement program designed to provide research skills and relevant information. Following six months of full-time equivalent study, research candidates present their 'Research Protocol' detailing their proposed research project to a panel of relevant academics in their discipline who provide advice to the students regarding their research progress. Candidates receive further feedback through annual reports and by participating in EXPO, an annual research intensive event designed to showcase the work of higher degree research students in the Faculty.

All Departments have active research programs and welcome applications from both domestic and international candidates. The Faculty is home to the following Departments, Centre and School:

Applied Finance Centre
Department of Accounting and Finance
Department of Actuarial Studies
Department of Business
Department of Business Law
Department of Economics
Macquarie Graduate School of Management

General higher degree research administrative enquiries

Email: hdrbusecon@mq.edu.au
Web: www.mq.edu.au/businessandeconomics

APPLIED FINANCE CENTRE

The Applied Finance Centre was established in 1980 and is the home of the world's largest Masters Program in Applied Finance.

The Centre's PhD program is closely linked with our research agenda. Research interests of the Centre place emphasis on issues in finance that potentially impact the activities of financial institutions, fund managers and corporations. These include areas such as financial and operational risk management, asset allocation, investment performance measurement, corporate finance, project valuation, executive compensation schemes and issues in banking and finance law.

Academic enquiries

Contact: Associate Professor Rob Trevor
Tel: +61 2 9850 8447
Email: rob.trevor@mq.edu.au
Web: www.mafc.mq.edu.au

DEPARTMENT OF ACCOUNTING AND FINANCE

Research interests in the Department of Accounting and Finance cover financial accounting, finance, management accounting, auditing and accounting information systems.

Academic enquiries

Contact: Associate Professor Sue Wright
Tel: +61 2 9850 8521
Fax: +61 2 9850 8586
Email: sue.wright@mq.edu.au
Website: www.accg.mq.edu.au

DEPARTMENT OF ACTUARIAL STUDIES

Research within the Department of Actuarial Studies is very active, investigating specific issues relevant to the field such as longevity and superannuation. Other major areas of research include risk competence, actuarial forecasting, analysis and modelling of demographic trends, impact of genetics and adverse selection in insurance actuarial profession and actuarial education.

Academic enquiries

Contact: Professor Piet de Jong
Tel: +61 2 9850 8576
Fax: +61 2 9850 9481
Email: piet.dejong@mq.edu.au
Web: www.acst.mq.edu.au

DEPARTMENT OF BUSINESS

Research in the Department of Business addresses a broad range of issues, including business, demographics and consumer markets; applied social research; international business and competitiveness; international

finance; organisational studies and leadership; knowledge management; labour-management studies and conflict resolution; and human resources management.

Academic enquiries

Contact: Associate Professor Stephen Chen
Tel: +61 2 9850 8459
Fax: +61 2 9850 6065
Email: stephen.chen@mq.edu.au
Web: www.bus.mq.edu.au

DEPARTMENT OF BUSINESS LAW

The Department of Business Law teaches law to students in areas such as applied finance, commerce-accounting, business administration, commerce, economics and e-business.

Academic enquiries

Contact: Associate Professor Hope Ashiabor
Tel: +61 2 9850 8457
Fax: +61 2 9850 9952
Email: hope.ashiabor@mq.edu.au

Contact: Professor Peter Gilles
Tel: +61 2 9850 8457
Fax: +61 2 9850 9952
Email: peter.gilles@mq.edu.au

Contact: Ms Patricia Blazey
Tel: +61 2 9850 8457
Fax: +61 2 9850 9952
Email: trish.blazey@mq.edu.au
Web: www.law.mq.edu.au

DEPARTMENT OF ECONOMICS

The Department of Economics conducts research in a wide range of areas including macroeconomics, microeconomics, Asian economics and economic development, history of economic thought, financial economics, econometrics and economic education.

Major areas of current research interest in macroeconomics and finance include fiscal, industry and inflation policy, financial reform, international economics and finance (including capital markets, taxation, exchange rates, energy markets, commodity futures) competition in financial markets, financial risk management, and labour market issues.

Microeconomic research includes major projects on the measurement of demand for public outlays, tax policy modelling, the economics of drug abuse, economics of the arts and culture, valuation of the environment and sustainable development and climate change, benchmarking occupational health and safety in aged care, deregulation, productivity and efficiency.

Research on the history of economic thought includes Keynes' thought, the relationship between economics, philosophy and politics, including theories of redistributive justice, and the history of Australian economic thought. The Department is also noted for its research on

the Japanese, Vietnamese and Burmese economies. Econometric research includes time series analysis, as well as macroeconomic and microeconomic modelling, index number theory, aggregation, duality, and applied econometrics.

Academic enquiries

Contact: Prof Jeffrey Sheen
Tel: +61 2 9850 7287
Fax: +61 2 9850 6069
Email: jeffrey.sheen@mq.edu.au
Web: www.econ.mq.edu.au

MACQUARIE GRADUATE SCHOOL OF MANAGEMENT

Macquarie Graduate School of Management's (MGSM) reputation for research reflects the commitment of Macquarie University to excellence in research and the outstanding work of both individuals and teams of researchers from the School. Strong links have been forged with both industry and the public sector through collaborative research programs. Many organisations and industry groups have achieved improved performance following in-depth research projects or consulting activities undertaken by key MGSM faculty.

MGSM's commitment to the continuing interchange of ideas and information between industry and academia has led to the establishment of a number of specialist research centres within the School to generate and disseminate the latest ideas, theories and information.

In addition to collaborative research projects, consulting activities and specialist research centres, MGSM offers leading-edge postgraduate research programs full-time or part-time.

Academic enquiries

Contact: Dr Steven Segal, Director of HDR Students
Tel: +61 2 9850 9907
Fax: +61 2 9850 9019
Email: steven.segal@mq.edu.au

General higher degree research administrative enquiries

Contact: Elizabeth Thomas
Tel: +61 2 9850 9038
Fax: +61 2 9850 9942
Email: elizabeth.thomas@mq.edu.au
Web: www.mgsm.edu.au/research

Faculty of Human Sciences

The Faculty of Human Sciences brings together a diverse range of disciplines that share a common interest in human development, education, and healthy functioning across the lifespan. Incorporating the Departments of Education, Linguistics, and Psychology, along with the Institute of Early Childhood, the Institute of Human Cognition and Brain Science, and the Australian School of Advanced Medicine, the Faculty promotes cross-disciplinary research and offers a stimulating research environment for students. Student engagement in the intellectual life of the various disciplines is actively encouraged by way of regular seminars, workshops and multi-supervisory teams, and culminates in an annual, student-run Research Festival in December. The Faculty is home to:

Department of Education
Department of Linguistics
Department of Psychology
Institute of Early Childhood
Institute of Human Cognition and Brain Science
The Australian School of Advanced Medicine

General higher degree research administrative enquiries

Email: hdrhmnsci@mq.edu.au
Web: www.mq.edu.au/humansciences

DEPARTMENT OF EDUCATION/ INSTITUTE OF EARLY CHILDHOOD

Education at Macquarie offers research programs which cover the spectrum of education across the lifespan from early childhood education, primary and secondary school education and special education, through to higher education research. The departments and centres supporting these research programs include: the Institute of Early Childhood, the Department of Education, the Macquarie University Special Education Centre, the Macquarie ICT Innovations Centre, the Centre for Research in Mathematics and Science Education and the Children and Families Research Centre.

Conferences held during the year provide the opportunity for commencing candidates to present their thesis proposals to a wider audience and receive feedback on them, enabling them to address any potential difficulties early in their candidature. Monthly student forums are also held to discuss relevant issues or provide useful research training sessions such as NVIVO or Endnote. A research digest, Educational Research at Macquarie, is published annually to facilitate networking and communication by providing useful thumbnail descriptions of active research projects being undertaken within the departments.

All of these features have created a research culture founded on collaboration, support, and networking, contained within a climate that allows student and academic

staff research to be sustained in an atmosphere of mutual support and collaboration.

Academic enquiries

Department of Education

Contact: Dr David Saltmarsh
Tel: +61 2 9850 8798
Fax: +61 2 9850 8674
Email: david.saltmarsh@mq.edu.au
Web: www.aces.mq.edu.au

Institute of Early Childhood

Contact: Associate Professor Manjula Waniganayake
Tel: +61 2 9850 9825
Fax: +61 2 9850 9890
Email: manjula.waniganayake@mq.edu.au
Web: www.aces.mq.edu.au

DEPARTMENT OF LINGUISTICS

Linguistics at Macquarie is the largest and most diverse of all such departments in Australia. It has a superior record in attracting and graduating research students from Australia and from a wide range of countries internationally. Such students may be studying on campus, in distance or online mode, or through blended modes of learning. The research themes of the Department include strong engagements with functional grammar, discourse analysis and pragmatics, applied linguistics and language and literacy education (including language testing and program evaluation), lexicography and corpus linguistics, stylistics, psycholinguistics, phonetics and phonology, together with clinically-based work in speech pathology, communication disorders and audiology. These themes have been further augmented by research into workplace-based studies of professional and organisational communication, intercultural communication, sign linguistics and deafness studies, translation and interpreting, first and second language acquisition, and sociolinguistics and bilingualism studies.

The Department incorporates the Centre for Language Sciences and the Adult Migrant Education Program (AMEP) Research Centres. It offers well-established and purpose-built clinical facilities in audiology and speech pathology, together with excellent laboratory facilities for speech research.

Academic enquiries

Contact: Dr Beth Armstrong
Tel: +61 2 9850 9183
Fax: +61 2 9850 9352
Email: beth.armstrong@mq.edu.au
Web: www.ling.mq.edu.au

Administrative enquiries

Contact: Robyn Guilmette
Tel: +61 2 9850 8749
Fax: +61 2 9850 9352
Email: robyn.guilmette@mq.edu.au

DEPARTMENT OF PSYCHOLOGY

Research conducted within the Psychology Department by staff and students is recognised at national and international levels, as demonstrated by the large number of staff and student academic publications, external research income earned by Department staff, plus presentations and key-note speeches delivered by staff and students at symposia held within Australia and abroad. The Department incorporates a research centre, the Centre for Emotional Health, and runs two clinics (the Anxiety Clinic and the Rod Power Psychology Clinic) that provide services for the general public along with clinical training for students. Research students can pursue their interests across a variety of areas including: animal behaviour and cognition, applied cognitive psychology, clinical neuropsychology, clinical psychology, decision making, developmental psychology, emotion and motivation, health psychology, learning theory and its applications (including driving behaviour), neuroscience, organizational psychology, perception, personal relationships, personality, psychopathology, physiological psychology, research methods, social psychology, and work and family.

The Department is committed to providing a supportive and stimulating research environment for its research degree students. Full details of staff research interest and facilities are available at www.psy.mq.edu.au/research.php.

Academic enquiries

Contact: Dr Jennifer Cornish
Tel: +61 2 9850 9467
Fax: +61 2 9850 8062
Email: jennifer.cornish@mq.edu.au
Web: www.psy.mq.edu.au

INSTITUTE OF HUMAN COGNITION AND BRAIN SCIENCE

The Institute of Human Cognition and Brain Science (formerly called MACCS) is an internationally recognised research facility in cognitive science and cognitive neuropsychology, initially funded by the Australian Research Council. The Centre is equipped with a variety of laboratories including: a High Performance computational modelling laboratory; an event-related potential (ERP) laboratory; an eye-tracking laboratory; a language acquisition laboratory; a hypnosis laboratory, an action laboratory and the KIT-Macquarie Brain Research Laboratory, which has the southern hemisphere's only magnetoencephalography (MEG) system. The adult MEG system is now complemented with the world's first MEG system designed to study cognitive processes in children. The Centre's aims are to carry out research and research training in cognitive science primarily in three general domains of cognition:

The language program: research on human language-processing emphasises computational modelling, patterns of language breakdown and language development.

The visual cognition program: research is conducted on various phenomena associated with the processing of brief visual displays, such as repetition blindness, the attentional blink, and failures of change detection.

The belief formation program: research takes a cognitive perspective on abnormalities of belief such as delusions and hallucinations.

Projects on memory and on the cognitive science of action are also being developed.

The major thrust of the Institute's research program is to carry out studies of people with acquired or developmental disorders of one or other of these domains as a way of learning more about the normal processes of cognition. Staff are committed to providing a supportive and interactive research environment for all research members, including students. Full details of staff, students, research projects and facilities are available at www.maccs.mq.edu.au.

Academic enquiries

Contact: Professor Max Coltheart
Tel: +61 2 9850 8086
Fax: +61 2 9850 6067
Email: max.coltheart@mq.edu.au
Web: www.maccs.mq.edu.au

Contact: Professor Stephen Crain
Tel: +61 2 9850 9434
Fax: +61 2 9850 6059
Email: stephen.crain@mq.edu.au
Web: www.maccs.mq.edu.au

THE AUSTRALIAN SCHOOL OF ADVANCED MEDICINE

The Australian School of Advanced Medicine is a graduate school that offers PhD and Masters programs by research. The School also offers post-fellowship subspecialty training for doctors and coursework programs for medical graduates who wish to become specialists. The School has brought together a group of world-class researchers, clinicians and educators to create an innovative competency-based training program with a focus on future trends in medicine. The major teaching hospital will be the 183-bed Macquarie University Private Hospital which is due to open in 2009. Together, the School and the hospital will set new standards in clinical care, medical education and research.

PhD programs available are focussed for the most part around our Neuroscience, Vascular Science and Neurosurgery Concentration of Research Excellence. We are composed of several very active teams of research scientists with many Post-Docs and Graduate students and substantial internal and external grant support. Scholarships (that include a generous living allowance and all tuition costs) are available to eligible candidates. Prior to our move to a purpose-built research facility and hospital, planned for 2009, the School is housed in modern laboratories and offices within the North Ryde Macquarie Campus.

Students interested in becoming candidates in any of our areas of interest should speak directly to the academics whose work interests them, or to the Associate Dean (Research), Professor Paul Pilowsky. Applicants should refer to the contact information below.

Academic enquiries

Biomedical Engineering

Contact: Professor Albert Avolio
Tel: +61 2 9850 4018
Fax: +61 2 9850 4010
Email: albert.avolio@mq.edu.au
Web: www.medicine.mq.edu.au

Medical Physiology and Cardiorespiratory Neuroscience

Contact: Associate Professor Ann Goodchild
Tel: +61 2 9850 4016
Fax: +61 2 9850 4010
Email: ann.goodchild@mq.edu.au
Web: www.medicine.mq.edu.au

Medical Physiology, Cardiovascular and Respiratory Neuroscience

Contact: Professor Paul Pilowsky
Tel: +61 2 9850 4015
Fax: +61 2 9850 4010
Email: paul.pilowsky@mq.edu.au
Web: www.medicine.mq.edu.au

Neurology

Contact: Professor Dominic B Rowe
Tel: +61 2 9850 4000
Fax: +61 2 9850 4010
Email: dominic.rowe@mq.edu.au
Web: www.medicine.mq.edu.au

Neurosurgical Vascular Sciences

Contact: Professor Marcus Stoodley
Email: marcus.stoodley@mq.edu.au
Web: www.medicine.mq.edu.au

Ophthalmology and Visual Science

Contact: Professor Stuart Graham
Tel: +61 2 9850 4000
Fax: +61 2 9850 4010
Email: stuart.graham@mq.edu.au
Web: www.medicine.mq.edu.au

Surgical Sciences

Contact: Professor John Cartmill
Tel: +61 2 9850 4014
Fax: +61 2 9850 4010
Email: john.cartmill@mq.edu.au
Web: www.medicine.mq.edu.au

Faculty of Science

The Faculty is the home to 11 National Research Centres, three of which are Australian Research Council Centres, three University Research Centres and seven Concentrations of Research Excellence (COREs). Many COREs span across two or more departments and seek to explore new frontiers in inter-disciplinary research areas. There are also numerous research groups in each of the following Departments:

Department of Biological Sciences
 Department of Brain Behaviour and Evolution
 Department of Chemistry and Biomolecular Sciences
 Department of Chiropractic
 Department of Computing
 Department of Earth and Planetary Sciences
 Department of Environment and Geography
 Department of Mathematics
 Department of Physics and Engineering
 Department of Statistics

Higher degree research candidates in the Faculty of Science have access to world-class research facilities. The Faculty provides funds for postgraduate research project costs, including conference travel. In addition to University and/or government scholarships, some postgraduate students may be eligible for top-up scholarships given by industry, CSIRO or the Faculty.

Higher degree research students in the Faculty of Science are supported by experienced supervisors, department-based Higher Degree Research Directors, and the Faculty Commencement Program which supplements the University Central Commencement Program. Candidates undertaking a research degree choose a topic of research in consultation with relevant academic staff and are assigned to a particular supervisor. Applicants are required to consult the relevant Departmental website for details of staff research interests and contact a potential supervisor in the Department prior to making a formal application.

Each Department offers its own discipline-specific research training units, with varying content. These units cover the basic protocols of academic research in the discipline, such as the formulation and testing of a hypothesis, literature review, thesis planning and time management. Workshops in research communication (oral presentation skills, writing academic papers and poster preparation) are also available in some departments. Annual seminars provide a forum for the presentation of research in progress.

Through regular progress reports and interviews, and/or work-in-progress presentations, research candidates receive feedback on their work from a panel of academics in their field. Some coursework may be required of candidates, depending upon individual circumstances.

Academic supervisors guide students in clarifying their own specific research project, in formulating the key problems to be tackled, and in creating a realistic sched-

ule for the prosecution of the research. Acceptance into a research degree is dependent on the availability of supervision.

General higher degree research administrative enquiries

Email: hdrscience@mq.edu.au
 Web: www.mq.edu.au/science

DEPARTMENT OF BIOLOGICAL SCIENCES

Biological Sciences is a multidisciplinary department conducting research on a wide range of contemporary biological problems. Staff collaborate strongly, generating multidisciplinary and innovative research funding. This has been recognised in the proliferation of research grants from government and industry, special research centres and the many high-quality research publications from the Department. Areas of research strength include molecular biology and biotechnology; environmental sciences; physiology and development; and marine biology.

Other strands of research include: virology, environmental and molecular microbiology, plant and animal physiology, biodiversity, biology of Australian marsupials, animal behaviour, ecology, conservation genetics, human biology, and developmental biology.

Academic enquiries

Dr Julia Raftos
 Tel: +61 2 9850 6275
 Fax: +61 2 9850 8245
 Email: julia.raftos@mq.edu.au
 Web: www.bio.mq.edu.au

DEPARTMENT OF BRAIN, BEHAVIOUR AND EVOLUTION

Research supported by the Department of Brain, Behaviour and Evolution spans temporal and spatial scales. Work on comparative cognition and neuroethology uses natural behaviour as a window on mental processes in humans and other animals. Studies of behavioural ecology are concerned with predator-prey interactions, conflict and mate choice, using a broad array of tools to study the evolution of social behaviour. Several of our current projects involve the exploration of sensory processes and the way in which these have shaped the design of animal signals. A diverse array of species is studied both in captivity and in the wild. A partial list includes terrestrial and marine mammals (hopping mice and seals), monotremes (echidnas), birds (penguins, finches, and fowl), reptiles (lizards), insects (ants, flies, assassin bugs and honeybees) and arachnids (orb-web and jumping spiders). Current field sites include Antarctica, Australia, Canada and Tunisia.

A dedicated new facility for the study of animal behaviour was completed in 2008. Together with the existing infrastructure, this new development provides brain,

behaviour and evolution research facilities unparalleled in Australia.

Full details are available on the website listed below.

Academic enquiries

Associate Professor Chris Evans

Tel: +61 2 9850 9230

Fax: +61 2 9850 9231

Email: chris.evans@mq.edu.au

Web: <http://galliform.bhs.mq.edu.au>

Dr Phil Taylor

Tel: +61 2 9850 9463

Fax: +61 2 9850 9231

Email: phil.taylor@mq.edu.au

DEPARTMENT OF CHEMISTRY AND BIOMOLECULAR SCIENCES

The Department is well positioned in taking a multidisciplinary approach to address contemporary research problems from the molecular perspective. Research interests include: analytical/bioanalytical chemistry, environmental chemistry; atmospheric chemistry; chemical education; physical/biophysical chemistry; organic/bioorganic chemistry, biological/protein chemistry, structural biology, chemical genomics/proteomics, materials chemistry, theoretical chemistry/bioinformatics, molecular biology/genetics, microbiology, molecular cellular biology, and biotechnology. Much of the Department's research funding comes from external bodies such as the Australian Research Council and the National Health and Medical Research Council. It is possible to arrange higher degree programs through collaboration with other departments, ranging from biology to geology to physics.

Academic enquiries

Dr Fei Liu

Tel: +61 2 9850 8312

Fax: +61 2 9850 8313

Email: fei.liu@mq.edu.au

Web: www.chem.mq.edu.au

DEPARTMENT OF CHIROPRACTIC

The Department of Chiropractic aims to actively foster academic staff and postgraduate research particularly in areas of community health, complementary medicine and in areas that support evidence-based chiropractic research and teaching. The Department maintains a diverse range of research interests in such areas as clinical, basic and applied chiropractic sciences and community health. The Department's research profile is growing rapidly and the Department is recognised internationally as a leader in research in chiropractic clinical and related investigations. Health care policy research is an emerging area of research interest with excellent prospects.

Academic enquiries

Associate Professor Rod Bonello

Tel: +61 2 9850 6383

Fax: +61 2 9850 9389

Email: rod.bonello@mq.edu.au

Web: www.chiro.mq.edu.au

DEPARTMENT OF COMPUTING

Research in the field of computing and information technology encompasses a broad spectrum of research areas, ranging from theoretical aspects of computing to modelling and system design to applications and their analysis. The Department's areas of research strengths and concentrations are represented by several Centres and active Research Groups. The Centres include: the Centre for Advanced Computing in Algorithms and Cryptography, the Centre of Australian Category Theory, and the Centre for Language Technology. The established research groups carry out focussed research on: information and networked system security, intelligent systems, interactive systems and virtual and interactive simulations of reality, and programming languages.

The academic staff of the Department include a member of the Australian Academy of Science, and a Microsoft Chair in Innovation in Computing. Several members of the Centre for Advanced Computing in Algorithms and Cryptography participate in the ARC Centre of Excellence on Quantum Technology, a part of the Quantum Information Science and Security CORE. Members of the Centre for Language Technology play a major role in the ARC Network in Human Communication Science.

Academic enquiries

Dr Abhaya Nayak

Tel: +61 2 9850 9565

Fax: +61 2 9850 9551

Email: abhaya.nayak@mq.edu.au

Web: www.comp.mq.edu.au

DEPARTMENT OF EARTH AND PLANETARY SCIENCES

The Department is actively involved in research and has many national and international research collaborations. Research activities range from environmental issues to exploration for natural resources, and to research in crust/mantle evolution, geodynamics and plate tectonics. Additional information on staff research interests and details of Departmental facilities can be found at www.es.mq.edu.au/geology.

The ARC Key Centre for Geochemical Evolution and Metallogeny of Continents performs interdisciplinary and integrated research to interpret the earth's lithosphere as a four-dimensional system (space and time). This links petrology and geochemistry, geophysics, petrophysics and tectonics. Further information is available at www.es.mq.edu.au/GEMOC.

The Macquarie University Centre for Ecostratigraphy and Palaeobiology undertakes research in disciplines intermediate between earth and biological sciences and chemistry, including aspects of biostratigraphy, palaeontology, palaeobiology, palaeoecology, ecostratigraphy, carbonate petrology, biochronology and exobiology. Further information is available at www.es.mq.edu.au/mucep.

Academic enquiries

Dr Tracy Rushmer

Tel: +61 2 9850 8346
Fax: +61 2 9850 8943
Email: tracy.rushmer@mq.edu.au
Web: www.es.mq.edu.au/geology

Dr Kelsie Dadd

Tel: +61 2 9850 7763
Fax: +61 2 9850 6904
Email: kelsie.dadd@mq.edu.au

DEPARTMENT OF ENVIRONMENT AND GEOGRAPHY

The Graduate School of the Environment conducts and promotes interdisciplinary research dealing with all aspects of the environment. The School encourages the inclusion of environmental considerations in decision-making by government, industry and the community within Australia and internationally. The School hosts the Australian Research Institute in Education for Sustainability (www.aries.mq.edu.au), the Marine Mammal Research Group (www.gse.mq.edu.au/research/mmrg/index.htm) and the Western New South Wales Archaeology Program (www.gse.mq.edu.au/research/wswap). Other research strengths include environmental chemistry, environmental ethics, and environmental planning and management.

Staff of Human Geography include award winning dedicated teachers with extensive experience in supportive research supervision. Staff research is concentrated in the areas of global economies and cultures, demographic and health changes, resource and environmental management, cities and urban governance. Aboriginal community development, tourism and development, and geographic information systems (GIS). Possibilities for collaborative research in aspects of environmental management and climate change exist with Physical Geography and the Graduate School of the Environment, whilst research in development studies is supported through collaborations with the Department of Anthropology. Human Geography is a major contributor to the Centre for Research on Social Inclusion (www.crsi.mq.edu.au) which undertakes interdisciplinary research on empirical and theoretical contemporary social issues. The Geographic Information Systems Centre supports the research of postgraduate students across the broad spectrum of geographic information systems activities. Support includes provision of research facilities for GIS analyses, maintenance of linkages

between the university and the GIS industry, promotion of joint research projects with industry and other major GIS users and encouraging postgraduate students to work independently with the available GIS software.

Physical Geography is active in research in the areas of atmospheric science, oceanography, climate change, climate impacts and air pollution, biometeorology, geographical information systems, geocology, geomorphology, natural hazards, pedology, quaternary studies and resource and environmental science and management. Risk Frontiers (www.riskfrontiers.com) was established to build safer communities through a better understanding of natural perils and their consequences. Risk Frontiers collaborates with industry, government and academic research groups around the world to develop innovative models for hazard, vulnerability and risk assessments. Core funding comes from global companies associated with the insurance industry. Current research focuses on floods, earthquakes, bushfires, volcanoes, hail, storms, landslides and multi-hazard risk assessments.

Academic enquiries

The Graduate School of the Environment

Dr Patricia Fanning

Tel: +61 2 9850 7979
Fax: +61 2 9850 7972
Email: patricia.fanning@mq.edu.au
Web: www.es.mq.edu.au/humgeog

Professor Peter Nelson

Tel: +61 2 9850 6958
Fax: +61 2 9850 7972
Email: peter.nelson@mq.edu.au

Human Geography

Dr Robyn Dowling

Tel: +61 2 9850 7477
Fax: +61 2 9850 6052
Email: robyn.dowling@mq.edu.au
Web: www.es.mq.edu.au/humgeog

Physical Geography

Dr Paul Beggs

Tel: +61 2 9850 8399
Fax: +61 2 9850 8420
Email: paul.beggs@mq.edu.au
Web: www.es.mq.edu.au/physgeog

DEPARTMENT OF MATHEMATICS

Major research interests in the Mathematics Department are in applied mathematics and analysis, category theory, number theory and mathematical physics. The Department has a high international profile that is supported by several large research grants in Analysis, Applied Mathematics and Category Theory.

The Applied Mathematics and Analysis group's interests cover several aspects of analysis and its applications. Macquarie University Number Theory group members,

from both Mathematics and Computing Departments, are engaged in research in analytic, algebraic and computational number theory, as well as related areas in cryptography, complexity and discrepancy theory. The Department of Mathematics houses the Centre for Australian Category Theory (www.ics.mq.edu.au/CoACT) with members from the Department of Computing and other universities. The Mathematical Physics group has interest in mathematical and conceptual problems of quantum theories and their connections to modern algebraic and analytic mathematical techniques.

Academic enquiries

Professor Xuan Duong

Tel: +61 2 9850 8948

Fax: +61 2 9850 8114

Email: xuan.duong@mq.edu.au

Web: www.maths.mq.edu.au

DEPARTMENT OF PHYSICS AND ENGINEERING

The major research interests of Physics at Macquarie University lie in the areas of astronomy and astrophysics, biophotonics, lasers and photonics, atomic and molecular physics, quantum science and technology, ultraviolet sources and the physics of semiconductors and materials. Research within the Department is supported by a variety of external and internal grants and excellent facilities, including an optical microcharacterisation facility, laser micromachining facility, optical surface profiler, thin film deposition systems and the Macquarie University Observatory, are available to support the research projects. See further details at www.physics.mq.edu.au/research.

The Department is home to nodes of two ARC Centres of Excellence and the ARC Research Network Fluorescence Applications in Biological and Life Sciences. The MQPhotonics University Research Centre seeks to explore new frontiers of optical science in seven inter-related areas: astrophotonics, biophotonics, microphonic optical systems, nano-optics and nanophotonics, photonics sources, optical sensing and imaging, and ultrafast laser applications. It includes a node of the multi-university ARC Centre for Ultrahigh-bandwidth Devices for Optical Systems. Biophotonics research includes advanced fluorescence detection techniques and flow cytometry, as well as development of therapeutic lasers. Theoretical analysis of optical phenomena and photonic device design underpins much of the experimental development. Applications of lasers and optics include material processing and laser cleaning, optical source development of novel single photon sources for quantum optics and quantum cryptography, and deep-UV discharge lamps for various applications. An innovative program in nitride development has led to a successful spin-off company, and this work is being extended to development of organic semiconductor materials for laser sources and detectors.

The Quantum Information Science and Security research group located in Physics, Mathematics and Computing is aiming to spearhead collaborative links with key international research groups in software and hardware research in quantum computation and security and includes a node of the multi-university ARC Centre for Quantum Computing Technology. Staff with expertise in theoretical quantum information science and computer science/mathematics are developing new applications through research focus on quantum algorithms and single molecule detection and magnetic resonance.

Astronomy and astrophotonics students' research projects may also be conducted at the Anglo-Australian Observatory and the Australia Telescope National Facility, located nearby. Strong links with other research groups within Australia and internationally and direct contacts with local industry give students a wide range of professional experiences during their study.

Engineering at Macquarie is underpinned by world-class expertise in the key areas of antennas, electromagnetics, guided-wave optics and photonics, integrated wireless communication systems, microelectronics, microwave and millimetre-wave devices, traffic theory and computer networks. The Department hosts the Concentration of Research Excellence in Wireless Communications and the Centre for Microwave and Wireless Applications. Major research groups are Centre for Electromagnetic and Antenna Engineering, Collaborative Nonlinear Electronics Research Facility, Guided-Wave Optics and Photonics Research, Integrated Wireless Communications Systems and Queueing Theory and Performance Analysis group. Research is funded by Australia Research Council competitive grants and fellowship schemes, other Australian agencies, and local and overseas industry. Joint research is also conducted with overseas universities and research institutions, several university-based centres and with the CSIRO ICT Centre, situated close to the Macquarie campus.

Academic enquiries

Physics

Associate Professor Judith Dawes

Tel: +61 2 9850 8903

Fax: +61 2 9850 8115

Email: judith.dawes@mq.edu.au

Web: www.physics.mq.edu.au

Engineering

Professor Karu Esselle

Tel: +61 2 9850 9141

Fax: +61 2 9850 9128

Email: karu.esselle@mq.edu.au

Web: www.engineering.mq.edu.au

DEPARTMENT OF STATISTICS

Members of the Mathematical and Computational Statistics group work broadly within the areas of non-parametric statistics, image processing, signal processing, stochastic finance, time series analysis and optimisation. Applications of their work are in finance, animal nutrition, medicine, defence and quantum computing.

The members of the Biostatistics, Epidemiology and Medical Statistics Research Group use modern statistical methods to analyse epidemiological data, and they carry out epidemiological studies in collaboration with medical researchers. Current research includes menopause studies, hearing studies and survival and quality of life studies of persons with breast cancer. The group has also been working on competing risks survival analysis, risk factors for HIV/AIDS, age-period-cohort modelling, the assessment of functional independence among the disabled, and the economic costs and benefits of strategies for health improvement. The group has several full-time PhD students, maintains strong links with NHMRC centres in Sydney, and collaborates closely with epidemiologists in South East Asia.

The group is working with the Biostatistics Collaboration of Australia in presenting a nationwide cross-institutional postgraduate program in biostatistics.

The Bioinformatics Group is investigating a range of questions, from the origin of introns to the prediction of three-dimensional protein structure. The rapidly growing trans-disciplinary research team employs ideas drawn from molecular biology, statistics, mathematics, and computer science. Projects underway include a study of the origin of introns, in which the group is working at the nucleotide level and exploring how statistical methods might resolve this question; development of new statistical methods for clustering in microarray experiments, involving both non-model-based and Bayesian approaches; protein structure prediction.

Researchers in the department publish their results in internationally respected journals and regularly present their work at international conferences. An important aspect of our research is the close integration with Research degree supervision which can be seen from our Student Research Projects.

Academic enquiries

Dr Jun Ma

Tel: +61 2 9850 8548
 Fax: +61 2 9850 7669
 Email: jun.ma@mq.edu.au
 Web: www.stat.mq.edu.au

Associate Professor Andrzej Kozek

Tel: +61 2 9850 8555
 Fax: +61 2 9850 7669
 Email: andrzej.kozek@mq.edu.au